



RYS Bicentenary Regatta

IRC Event including the Race Around the Island (or Alternative Long Inshore Race)

COWES, ISLE OF WIGHT

25 to 31 July 2015

SAILING INSTRUCTIONS

To be read in conjunction with the Useful Information Document

ORGANISING AUTHORITY:

ROYAL YACHT SQUADRON RACING

THE CASTLE
COWES
ISLE OF WIGHT
PO31 7QT

TEL: + 44 (0)1983 292191

FAX: + 44 (0)1983 200253

mail@rys.org.uk

www.bic2015.org.uk

Times of High Water Portsmouth (HWP)

All times UTC + 1 hour

Monday 27 July	0845
Tuesday 28 July	1002
Wednesday 29 July	1049
Thursday 30 July	1130
Friday 31 July	1210

1. REGATTA OFFICE

The Regatta Office will be located at Regatta House, 18 Bath Road, Cowes tel +44 (0)1983 295744
www.bic2015.org.uk

2. RULES

2.1 Racing will be governed by:

- a) The rules as defined in the Racing Rules of Sailing (RRS) 2013 – 2016
- b) The ISAF Offshore Special Regulations 2014/15 for Category 4 except as modified by Class Rules for all IRC and Cruiser classes. For yachts entered in Class 0 IRC, Regulation 3.14 regarding lifelines, stanchions and pulpits will not apply. Yachts that do not fully comply with the relevant requirements of the ISAF Offshore Special Regulations for Category 4 Races may, in exceptional circumstances, apply to the Organising Authority for written dispensation from specified parts of the regulations. Such requests shall be made by midnight on Saturday 25 July in order to allow due consideration to be given to the application and to any conditions that may be applied.
- c) The IRC Rules Parts A, B, C For the purposes of IRC Rule 21.1.5(d) this is a regatta run on consecutive days. However, the Race Around the Island (RATI), (or alternative Long Inshore Race) shall not be covered by this Rule. For the sake of clarity boats may carry additional sails for the RATI (or alternative Long Inshore Race).
- d) Class Rules as appropriate
- e) The prescriptions of the Royal Yachting Association will not apply.
- f) The Rules of the Multihull Offshore Cruising and Racing Association (MOCRA).
- g) In the event of a discrepancy between the Notice of Regatta and its Annexes and the Sailing Instructions, the Sailing Instructions will take precedence. This changes RRS 63.7.
- h) Anchors shall not be carried on deck such that they protrude forward of the stem.

3. NOTICES TO COMPETITORS

- 3.1 Notices to competitors will be posted on the Official Notice Board at the Regatta Office and on the Regatta Website at www.bic2015.org.uk

4. CHANGES TO SAILING INSTRUCTIONS

- 4.1 Any changes to the Sailing Instructions after those available at registration will be posted at the Regatta Office and on the Regatta website www.bic2015.org.uk at least two hours before the advertised warning signal of the race or races concerned. Code flag 'L' over the relevant numeral pennant(s) will be displayed from the RYS Lodge flagstaff and the change may also be announced on VHF Channel 5 immediately following the daily time check (see SI 6.3). It is the responsibility of each yacht to obtain any such changes from the Regatta Office or the Regatta website.

5. SIGNALS MADE ASHORE

- 5.1 Signals made ashore will be displayed at the Royal Yacht Squadron (RYS) main flagstaff.
- 5.2 Flag 'AP' over 'AP' with two sound signals means all racing is postponed indefinitely and crews are advised not to go afloat. The first warning signal will be made not less than 50 minutes after the

removal of AP over AP, at a time which will be announced on VHF Channel 5. The removal of this signal with one sound signal may be followed by a single 'AP'. This adds to RRS 27.3 and Race Signals.

6. SCHEDULE

The Organising Authority reserves the right to alter the schedule of races. Any such change will be posted by 2000 on the day before it will take effect.

6.1 Registration

This will take place at the Regatta Office from 0800-1730 on Saturday 25 and Sunday 26 July.

6.2 Mandatory Skippers' Briefing

This will take place at 1730 on Sunday 26 July in the RYS Pavilion, followed by the Opening Reception at 1830. Either the skipper and or the navigator from each yacht will be asked to sign in at the briefing.



6.3 The Race Committee will transmit a time check at 0900 daily (0700 on Wednesday 29 July) on VHF Channel 5. This will be followed by direction of start (on Wednesday 29 July in the case of the Alternative Long Inshore Race) and other race management information, including but not limited to postponements, and other Race Committee intentions. Failure to make a broadcast or to time it accurately or to receive such transmissions will not be grounds for redress. This changes RRS 62.1(a).



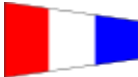

6.4 At or before 2000 on Tuesday 28 July, the Race Committee will announce its intention regarding the race to be sailed on Wednesday 29 July, which will either be the scheduled Race Around the Island (RATI) or an alternative Long Inshore Race, depending on anticipated weather conditions. The announcement will be posted on the Official Notice Board and Regatta Website www.bic2015.org.uk. Confirmation of the style of race and course to be sailed will be made in announcements on VHF Channel 5, commencing at 0700 on Wednesday 29 July.

6.5 The Prize Giving Ceremony will take place at the RYS Pavilion at 1730 on Friday 31 July.

6.6 Schedule of Races

(NB the J Class will sail under their own Sailing Instructions. Their schedule is included below for the information of all other classes)

Date	Class	Class Flag	Event	Warning signal
Monday 27 July	J Class		Race 1	1020
Tuesday 28 July			Race 2	1020
Wednesday 29 July			Race 3 (RATI)	0920
Thursday 30 July			Race 4	1020
Friday 31 July			Race 5	1020
Monday 27 July	Class 0 IRC	NP 0 	Race 1	1035
Tuesday 28 July			Race 2	1035
Wednesday 29 July			Race 3 (RATI)	0800
Thursday 30 July			Race 4	1035
Friday 31 July			Race 5	1035

Monday 27 July	Class 1 IRC	NP 1 	Race 1	1050
Tuesday 28 July			Race 2	1050
Wednesday 29 July			Race 3 (RATI)	0815
Thursday 30 July			Race 4	1050
Friday 31 July			Race 5	1050
Monday 27 July	Class 2 IRC	NP 2 	Race 1	1100
Tuesday 28 July			Race 2	1100
Wednesday 29 July			Race 3 (RATI)	0825
Thursday 30 July			Race 4	1100
Friday 31 July			Race 5	1100
Monday 27 July	Class 3 IRC	NP 3 	Race 1	1110
Tuesday 28 July			Race 2	1110
Wednesday 29 July			Race 3 (RATI)	0835
Thursday 30 July			Race 4	1110
Friday 31 July			Race 5	1110
Monday 27 July	Class 4 IRC	NP 4 	Race 1	1120
Tuesday 28 July			Race 2	1120
Wednesday 29 July			Race 3 (RATI)	0845
Thursday 30 July			Race 4	1120
Friday 31 July			Race 5	1120

7. CLASS FLAGS

- 7.1 Class Flags which will be as per the Schedule of Racing in SI 6.6 above shall be flown from the backstay at all times while racing.

8. RACING AREA

- 8.1 The Racing Area is the waters surrounding the Isle of Wight, shown in SI Appendix 1.
- 8.2 All yachts shall remain clear of the Level Rating Event which will take place with daily racing (with the exception of Wednesday 29 July) on a windward leeward course set in the Eastern Solent and also the Team Racing Event, which will either take place in Osborne Bay to the East of Cowes Harbour or Thorness Bay to the West.

9. NAVIGATION RESTRICTIONS

- 9.1 All yachts shall comply with Associated British Ports Notice to Mariners No 3 of 2014 giving details of a Moving Prohibited Zone, which shall rank as an obstruction for the purposes of RRS 19 and 20.
- 9.2 Yachts, in whatever direction they are racing, shall not pass:
- a) North of the barrier off Durns Point east of Lymington
 - b) North of Horse Sand Fort
 - c) South of No Man's Land Fort
- 9.3 Yachts shall not anchor or kedge in the Cowes Harbour fairway and in the area between Stone Point and Gurnard Bay as indicated on the racing chart in these Sailing Instructions (Appendix 1) and on Admiralty Chart 2040. Gas and water pipes, telephone and electricity cables carrying 133,000 volts lie on the sea bed.
- 9.4 Yachts shall not enter the exclusion zone protecting the construction area around the new outer harbour breakwater. This is shown diagrammatically in the local Cowes Harbour Commission Notice to Mariners see SI Appendix 2. In whichever direction they are racing, yachts shall pass north of Cowes Harbour Number 2 buoy and all buoys marking the exclusion zone. The exclusion zone shall rank as an obstruction for the purposes of RRS 19 and 20.
- 9.5 All yachts shall observe Associated British Ports Notice to Mariners No 36 (T) of 2015 (See SI Appendix 3) giving details of Moving Safety Zones established around competing J Class and large classic yachts.
- 9.6 Protests for infringements of ABP and CHC Byelaws, General Directions and Notices to Mariners may be brought only by the Race Committee or International Jury who may initiate a protest as the result of a report from the vessel affected or one made by either ABP or CHC staff. This changes RRS 60.

10. THE COURSES

10.1 Course Marks

- 10.1.1 For the Race Around the Island on Wednesday 29 July (if sailed – see SI 6.4), the course will be: Start, pass between No Man's Land and Horse Sand Forts, Bembridge Ledge Buoy to Starboard, St Catherine's Point to Starboard, Bridge Buoy to Starboard, Gurnard Buoy to Starboard, to Finish on the Royal Yacht Squadron Line (see SI 17.1.1 below).
- 10.1.2 For all other races, including the alternative Long Inshore Race if sailed (see SI 6.4), fixed navigation buoys and racing marks that may be used have been allocated two character identifying buoy codes as shown in the SI Appendix 1 Racing Chart issued at registration.
- 10.2 The course to be sailed will be broadcast by the Race Committee (call sign: Castle One) on VHF Channel 5 after the Warning Signal and as soon as possible after the Preparatory Signal, and similarly will be repeated by the Race Committee (call sign Castle Two) in order to confirm that the course broadcast was correctly transmitted. There will be no visual course signals. This changes RRS 27.1. On Wednesday 29 July, additional announcements regarding the course to be sailed will be made at regular intervals, starting at 0700
- 10.3 Unless on the first leg of her course having started to the West a yacht shall not pass through any finishing line unless it is a mark of the course or she is finishing.

11. MARKS

11.1 Starting and Finishing Marks are illustrated in SI Appendix 3

12. THE START

12.1 Races will be started using RRS 26 with the warning signal made ten minutes before the starting signal. The starting signal, with the exception of Classes 0 IRC and Class 1 IRC, will normally be the warning signal for the next class to start and likewise for all subsequent classes. The warning signal for Class 0 IRC and Class 1 IRC will be five minutes after the starting signal for the preceding class.

12.2 Start sequence

12.2.1 With the exception of Wednesday 29 July (see SI12.2.2 below) and unless changed by the Race Committee Classes shall start in the following sequence:

Starting on the RYS outer line (see SI's 12.4 and 12.5 below)

J Class (Subject to separate Sailing Instructions)

Class 0 IRC

Class 1 IRC

Starting on the RYS inner line (see SI's 12.4 and 12.5 below)

Class 2 IRC

Class 3 IRC

Class 4 IRC

12.2.2 On Wednesday 29 July classes shall start in the following sequence

Starting on the RYS Inner Line (see SI 12.5 below)

Level Rating Class

Starting on the RYS Outer Line (see SI 12.5 below)

Class 0 IRC

Class 1 IRC

Starting on the RYS Inner Line

Class 2 IRC

Class 3 IRC

Class 4 IRC

Starting on the RYS Outer Line

J Class

12.3 The start sequence countdown for each start will be announced on VHF Channel 5, accompanied by sound signals and signal flags displayed from the RYS yardarm. Failure or delay in any transmission will not be grounds for redress. This changes RRS 62.1(a)

12.4 The RYS starting line which consists of an inner and outer line (see SI Appendix 3) is an extension of the line formed by the RYS Main flagstaff and the white line on the orange diamond on the Castle, limited by inner and outer marks, which rank as starting marks.

12.5 The starting line is on a bearing of approximately 347° (T) from the RYS flagstaff. For J Class, Class Zero and Class One IRC starting on the outer line the limit marks are Williams Shipping buoy to the north and a large, yellow, cylindrical, Inflatable mark, 'Alpha', approximately 1700m to its south. For

all other IRC classes starting on the inner line the outer limit mark at the northern end of the line is 'Alpha' approximately 500m to the north of the RYS flagstaff. There is no inner limit mark for the Inner Line. Williams Shipping buoy and 'Alpha' may not be precisely on the starting line transit. A committee vessel may be on station to the North of Williams Shipping.

12.6 Direction of start:

12.6.1 The Race Committee will announce the intended direction of start at the daily time check (see SI 6.3). Not less than fifteen minutes before the start of each race, a signal displayed at the RYS Lodge flagstaff will indicate the direction of the start. A red flag indicates starting to the East. A green flag indicates starting to the West. The Race Around the Island will start to the East.

12.6.2 After a postponement this signal may be changed to reverse the direction of subsequent starts. Any such announcement will also be made on VHF Channel 5.

12.7 Class 0 IRC start

The starting time for a yacht in Class 0 IRC that starts within two minutes after her starting signal will be the time that she starts. This changes RRS A3. The starting time for any other yacht will be the time of its starting signal.

12.8 Yachts in any class shall not start later than ten minutes after their valid starting signal. If a yacht has a genuine reason for starting later than ten minutes after her valid starting signal she shall inform the Race Committee in writing, as soon as practicable after finishing, including in full the circumstances and reasons for the late start. The Race Committee will consider whether a penalty is applicable. This SI shall not be ground for protest by another yacht. This changes RRS 60.1.

13. OBSTRUCTING THE STARTING LINE

13.1 Yachts whose warning signal has not been made shall keep clear of the starting area and of all yachts whose warning signal has been made.

14. INDIVIDUAL RECALL

14.1 Identification of recalled yachts may be announced on VHF Channel 5.

14.2 Any yacht in Class 0 IRC on the course side at her starting signal shall not return to the non course side and will be given a time penalty of five minutes added to her elapsed time plus the time to the nearest second she was on the course side before her starting signal. A yacht in Class 0 IRC crossing the starting line more than three minutes before her starting signal will be scored OCS; this changes RRS 28.1, 29.1, A4.2

15. GENERAL RECALL

15.1 General recalls will be announced on VHF Channel 5.

15.2 The time of the new warning signal for the recalled class will be announced as soon as practicable on VHF Channel 5. All other classes that have not already started will then start in sequence after the recalled class.

16. SHORTENING COURSE

16.1 Courses may be shortened at any mark. If a committee vessel on station is displaying code flag S (with a class flag or class flags), yachts of the indicated class or classes shall finish between the

orange flag on the committee vessel and the nearby mark from the direction of the last mark. This adds to RRS 32.

17. THE FINISH

17.1 Unless shortened in accordance with SI 16, yachts shall finish either on the Royal Yacht Squadron Line (SI 17.1.1 below) or on the Gurnard Line (SI 17.1.2 below) (See SI Appendix 1)

17.1.1 The Royal Yacht Squadron Line will be between the RYS main flagstaff and 'Alpha' a large yellow cylindrical inflatable buoy approximately 500m north of the RYS Main Flagstaff

17.1.2 The Gurnard Line will be between the orange flag on the JOG hut mast (approximately 150 metres east of Egypt Point), and the course side of Gurnard Cardinal Mark.

17.2 Each yacht shall record her own finishing time and, if possible, the sail number or identification of the yacht immediately ahead and astern (irrespective of class) for each race. Each yacht shall make a declaration in accordance with SI 18 below.

18. DECLARATION and RETIREMENT

18.1 After every race, each yacht shall declare her finishing time or announce her retirement by one of the following methods:

18.1.1 By text message, as described in para 4.8 of the Useful Information Document within 30 minutes of her finishing time.

18.1.2 By completing a paper declaration form at the race office as soon as practicable after racing and no later than one hour after the time limit (see SI 20).

18.1.3 For retirements **only**, by informing the Race Committee as soon as possible on VHF Channel 77.

18.2 A yacht that fails to make a declaration in accordance with SI 18.1.1 or 18.1.2 may, within 24 hours of the time limit specified in SI 18.1.2, complete a late declaration form at the Regatta Office stating that the boat sailed the course correctly and complied with all relevant rules. In this case, the yacht will be given a penalty of 4% of her elapsed time.

19. PENALTY SYSTEM

19.1 RRS 44 will not apply. A yacht that may have broken a rule of part 2 while racing or that has broken RRS 31 may take a Time Penalty unless she has caused serious damage or gained a significant advantage in the race or regatta in which case she shall retire. The Time Penalty will be to add 2% of her elapsed time to her elapsed time, rounding the increased time to the nearest second.

19.2 A yacht that intends to take a time penalty shall display a yellow flag at the first reasonable opportunity and keep the flag displayed until she has finished. At her finish she shall inform the Race Committee on VHF Channel 77 that she is taking the penalty.

19.3 A yacht that takes a penalty shall not be penalized further with respect to the same incident unless she failed to retire when this sailing instruction required her to do so.

19.4 A yacht shall not be scored as having finished outside a time limit solely by the application of a Time Penalty.

19.5 A yacht involved in a protest who acknowledges an infringement of a rule of part 2 prior to the hearing shall receive a penalty of 4% of her elapsed time.

20. TIME LIMITS

- 20.1 With the exception of the races on Wednesday 29 July (see SI 20.2 below) and Friday 31 July (see SI 20.3 below), the time limit will be 60 minutes after the first valid finisher in each class, unless no yacht has finished by 1630 in which case the time limit will be 1730. This changes RRS 35, A4 and A5.
- 20.2 The time limit for the Race Around the Island or alternative Long Inshore Race will be 2100 for all classes.
- 20.3 The time limit for all races on Friday 31 July will be 1530.
- 20.4 Yachts not finishing within the Time Limit will be scored Did Not Finish (DNF). This changes RRS 35, A4 and A5.

21. PROTESTS AND REQUESTS FOR REDRESS

- 21.1 The protest time limit is 2 hours after the last yacht in the protestor's class has finished racing, except on Friday 31 July when the protest time limit is 1 hour after the last yacht in the protestor's class has finished racing. The same time limit applies to protests by the Race Committee about incidents they observe in the racing area and to requests for redress. This changes RRS 61.3 and 62.2.
- 21.2 Notices will be posted on the Official Notice Board, within 30 minutes of the protest time limit to inform competitors when there is a hearing in which they are parties to a hearing or named as witnesses. Notices of protests by the Race Committee will be posted on the Official Notice Board to inform yachts under RRS 61.1. These notices will be considered as notification under RRS 63.2.
- 21.3 Hearings will be at the Regatta Office. The earliest time at which a hearing will start will be stated on the notice and parties should be available and in the vicinity of the room at which the hearing will be held with any required witnesses
- 21.4 For infringements of rules other than rules of Part 2 the International Jury may impose a penalty other than disqualification or decide not to impose a penalty.
- 21.5 Decisions of the International Jury will be final as provided in RRS 70.5
- 21.6 On the last day of racing a request for reopening a hearing shall be delivered
- (a) within the protest time limit if the party requesting reopening was informed of the decision on the previous day;
 - (b) no later than 30 minutes after the party requesting reopening was informed of the decision on that day.

This changes RRS 66.

21.7 CLASSIFICATION PROTEST TIME LIMIT:

The Classification Protest Time Limit (ISAF Regulation 22.5) will be 1900 on Sunday 26 July or 24 hours after the posting of a changed Crew List.

22. USE OF ENGINES AND THRUSTERS

- 22.1 For safety reasons, yachts may run their engines in neutral at any time during the race. Engines may be put into gear and thrusters may be used at any time during the race for a yacht to take action in order to avoid collision.

22.2 A yacht that puts her engine in gear or uses her thruster at any time while racing shall submit a written declaration of "engine use" to the International Jury as soon as practical after racing, stating the time the engine was in gear or thruster used, the reason for using it, the duration of use and any potential competitive advantage realized.

22.3 The International Jury will review all declarations on engine and thruster use to determine whether use was appropriate and what, if any, penalty to award.

23. EQUIPMENT AND MEASUREMENT CHECKS

23.1 The Race Committee may inspect or measure any yacht or personal equipment at any time

24. EVENT ADVERTISING

24.1 Yachts in one design classes shall comply with the advertising limitations determined by their class association

24.2 Except as above yachts may advertise in accordance with ISAF Regulation 20

25. TRACKING

25.1 All yachts shall carry a TracTrac tracking unit for the duration of the event. The units are standalone and will be supplied by TracTrac www.tractrac.com. The unit weighs 60g approximately and is half the size of an iphone. The device is not waterproof.

25.2 The tracking device comes in an AquaPac with a rope tie (Lanyard) and is recommended to be attached at the stern of the yacht, as high as possible to avoid water contact and as near the centreline as possible, clear of any obstructions or other instruments and in clear view of the sky. Please secure with cable tie or tape so that it does not hang loosely or bang around. **Do not press any buttons, the unit will turn on automatically.**

25.3 The units will need charging on a daily basis. It will be the responsibility of each crew to charge their TracTrac unit overnight ready for racing the following day. Full fitting and charging instructions will be provided by TracTrac. Tracking units are requested to be mounted by 0845 daily (0730 on Wednesday 29th July), in order for them to be remotely tested by TracTrac.

25.4 The tracking units will be available at registration. A £250 refundable deposit, which may be set against a credit card, will be required. Tracking units shall be returned to the Regatta Office before the prize giving at 1730 on Friday 31st July.

26. RADIO COMMUNICATIONS

26.1 All yachts shall be equipped with VHF Channels 5, 77. The Race Committee (call sign 'Castle One') will make course and other race management announcements on VHF Channel 5. Yachts are requested to listen on this channel from 0900 daily and from 0700 on Wednesday 29 July until after finishing and leaving the race area. Yachts shall not transmit on VHF Channel 5. Yachts wishing to transmit to the Race Committee shall do so on VHF Channel 77.

26.2 For any regatta channel communication failure, yachts are requested to listen out on VHF Channel 16.

26.3 Having departed Cowes J Class, Class 0 IRC and any yachts over 70ft LOA are requested to maintain a listening watch on Southampton VTS VHF Channel 12, used by Southampton Harbour Patrol launch (call sign "SP") showing a blue flashing light and escorting large commercial vessels through the Precautionary Area.

- 26.4 Yachts may make an all stations advisory call on VHF Channel 69, the Cowes working channel, when departing or arriving in Cowes. All Red Funnel ferries and high speed catamaran ferries maintain a listening watch on this channel.

27. SCORING

- 27.1 Races will be scored on corrected time by TCC using the RRS Appendix A Low Point Scoring System.
- 27.2 One race is required to be completed to constitute a series.
- 27.3 If four or more races are completed in a series, a yacht's series score will be the total of her race scores excluding her worst score. If fewer than four races are completed in a series, a yacht's series score will be the total of her race scores. The Race Around the Island or Long Inshore Race will not be discarded.
- 27.4 Any race abandoned due to failure of any yacht to finish within the time limit race will not be re-sailed.

28. RESULTS

- 28.1 Results will be posted on the Official Notice Board and on the Regatta Website www.bic2015.org.uk

29. PRIZES

- 29.1 Prizes will be awarded to the winner, second and third placed yachts in each class scored on the basis of the Low Points System. This changes RRS Appendix A.
- 29.2 Separate prizes will be allocated to the Cowes Combined Clubs and invited Inter-Club event.
- 29.3 A special Corinthian Trophy will be awarded to the highest placed yacht of over 60ft hull length that conforms with GNOR Annex C 3.2.2

30. INDEMNITY

Rule 4 of the Racing Rules of Sailing states: "The responsibility for a boat's decision to participate in a race or to continue racing is hers alone."

Sailing is by its nature an unpredictable sport and therefore involves an element of risk. All those taking part should be fully aware and conscious of the actual and potential risks involved in active watersports. By taking part in the event, each competitor agrees and acknowledges that:

- a) They are aware of the inherent element of risk involved in the sport and accept responsibility for the exposure of themselves, their crew and their boat to such inherent risk whilst taking part in the event;
- b) They are responsible for the safety of themselves, their crew, their boat and their other property whether afloat or ashore;
- c) They accept responsibility for any injury, damage or loss to the extent caused by their own actions or omissions;
- d) Their boat is in good order, equipped to sail in the event and they are fit to participate;
- e) The provision of a race management team, patrol boats, umpires and other officials and volunteers by the organiser does not relieve them of their own responsibilities;
- f) The provision of patrol boat cover is limited to such assistance, particularly in extreme weather conditions, as can be practically provided in the circumstances;
- g) They are responsible for ensuring that their boat is equipped and seaworthy so as to be able to face extremes of weather; that there is a crew sufficient in number, experience and fitness to withstand such weather; and that the safety equipment is properly maintained, stowed and in date and is familiar to the crew]; and

- h) Their boat is adequately insured against third party claims. For this Regatta the amount required for all competitors is not less than £2 million or equivalent.

List of SI Appendices

SI Appendix 1 Racing Chart and List of Course Marks and Symbols

SI Appendix 2 Cowes Harbour Commission Local Notice to Mariners 05(T) of 2015

SI Appendix 3 Associated British Ports Notice to Mariners No 36 (T) of 2015

SI Appendix 4 High Voltage Cables and Pipelines

SI Appendix 5 Southampton Harbour Bye laws



APPENDIX 1 Racing Marks and Charts

SOLENT MARK CODES 2015 - IN ZONES

Zone 1 Western Approaches					Zone 4 Mid Solent (E)				
ID	Name	Colour	Lat N	Long W	ID	Name	Colour	Lat N	Long W
1A	Peveril Ledge	R	50 36.41	01 56.10	4A	Reach	G	50 49.05	01 17.65
1B	Poole Bar No 1	G	50 39.29	01 55.14	4B	Coronation	Y	50 49.55	01 17.62
1C	Haven Insurance	Y	50 40.31	01 54.02	4C	Stormforce Coaching	Y	50 49.21	01 17.46
1D	(spare)				4D	Calshot	BY	50 48.44	01 17.03
1E	Christchurch Ledge Buoy	Y	50 41.60	01 41.50	4E	RYS	Y	50 47.67	01 17.00
1F	Needles Fairway	RW	50 38.24	01 38.98	4F	Wight Vodka	Y	50 47.20	01 17.00
1G	South West Shingles	R	50 39.29	01 37.52	4G	Cutter	Y	50 49.45	01 16.91
1H	Bridge	YBY	50 39.63	01 36.88	4H	East Knoll	G	50 47.96	01 16.83
1J	Shingles Elbow	R	50 40.37	01 36.05	4J	hamblewinterseries.com	Y	50 48.63	01 16.65
1K	North Head	G	50 42.69	01 35.52	4K	Royal London YC	Y	50 46.15	01 16.65
1L	Needles Lighthouse	RW	50 39.73	01 35.50	4L	William	Y	50 49.03	01 16.49
1M	Warden	G	50 41.48	01 33.55	4M	Hill Head	R	50 48.07	01 16.00
1N	North East Shingles	BYB	50 41.96	01 33.41	4N	Flying Fish	Y	50 47.27	01 15.90
Zone 2 West Solent					4P	West Ryde Middle	YBY	50 46.48	01 15.79
2A	Echopilot	Y	50 42.79	01 32.53	4Q	Wilson Covers	Y	50 48.46	01 15.72
2B	Dunford	Y	50 43.38	01 31.54	4R	Darling Buoy	Y	50 49.18	01 15.71
2C	Colten	Y	50 43.83	01 30.86	4S	Royal Southern	Y	50 48.88	01 15.57
2F	Berthon	Y	50 44.20	01 29.22	4T	Norris	R	50 45.97	01 15.51
2H	Paul Jackson	Y	50 44.30	01 28.16	4U	Sunsail	Y	50 46.43	01 15.09
2J	Zwerver	Y	50 45.11	01 27.34	4V	Hamble Yacht Services	Y	50 48.13	01 14.64
2K	Quod Possumus!	Y	50 44.83	01 26.09	4W	Artemis The Profit Hunter	Y	50 47.33	01 14.59
2R	Durns	Y	50 45.43	01 25.89	4X	Rolly Tasker Sails	Y	50 45.53	01 14.39
2T	Lymington Bank	R	50 43.10	01 30.85	4Y	North Ryde Middle	R	50 46.61	01 14.31
2X	Solent Bank	R	50 44.23	01 27.37	4Z	South Ryde Middle	G	50 46.13	01 14.16
20	Sconce	BY	50 42.53	01 31.43	40	Fastnet Insurance	Y	50 47.66	01 13.65
21	Black Rock	G	50 42.53	01 30.43	41	East Bramble	BYB	50 47.23	01 13.64
22	George Hotel	Y	50 42.86	01 29.40	42	Peel Bank	R	50 45.49	01 13.35
24	The English Summer Berry Co	Y	50 42.86	01 28.42	43	Chilgrove Gin	Y	50 46.16	01 13.09
25	Caldwells Estate Agents	Y	50 43.15	01 27.49	44	Champagne Pol Roger	Y	50 47.31	01 12.10
26	Hamstead Ledge	G	50 43.87	01 26.18	45	South East Ryde Middle	YB	50 45.93	01 12.10
Zone 3 Mid Solent (W)					46	North East Ryde Middle	R	50 46.21	01 11.88
3A	West Lepe	R	50 45.24	01 24.09	Zone 5 East Solent				
3B	eDigitalResearch	Y	50 44.18	01 23.79	5A	Mackley Van Oord	Y	50 45.03	01 11.89
3C	craftinsure.com	Y	50 45.64	01 23.12	5B	Mother Bank	R	50 45.49	01 11.21
3D	Salt Mead	G	50 44.51	01 23.04	5C	Browndown	G	50 46.57	01 10.95
3E	Cowes Radio	Y	50 46.13	01 22.19	5D	Kemps Quay	Y	50 45.18	01 09.65
3F	elephantboatyard.co.uk	Y	50 44.63	01 21.88	5E	Darling Associates Architects	Y	50 46.26	01 08.76
3G	Sevenstar Yacht Transport	Y	50 46.58	01 21.46	5F	North Sturbridge	BY	50 45.33	01 08.23
3H	East Lepe	R	50 45.93	01 21.07	5G	RNC & RAYC	Y	50 46.42	01 07.90
3J	Baxters (Cowes Week only)	O	50 45.23	01 20.69	5H	Portsmouth Sailing Club	Y	50 46.82	01 07.35
3K	Lepe Spit	YB	50 46.78	01 20.64	5J	KB Dry Stack	Y	50 46.61	01 07.29
3L	Gurnard Ledge	G	50 45.51	01 20.59	5K	Look Marine Insurance	Y	50 47.08	01 06.78
3M	(spare)				5L	(spare)			
3N	Quinnell	Y	50 47.07	01 19.88	5M	Gleeds	Y	50 46.16	01 06.39
3P	Bainbridge International	Y	50 45.68	01 19.98	5N	Mary Rose	Y	50 45.80	01 06.20
3Q	EFG	Y	50 45.97	01 19.45	5P	Vail Williams	Y	50 46.51	01 05.98
3R	North East Gurnard	R	50 47.06	01 19.42	5Q	Outer Spit	YB	50 45.58	01 05.50
3S	Royal Thames	Y	50 47.81	01 19.25	5R	Horse Sand Buoy	G	50 45.53	01 05.27
3T	KMS	Y	50 46.10	01 18.87	5S	Saddle Buoy	G	50 45.20	01 04.98
3U	Gurnard	BY	50 46.22	01 18.84	<div>Mark codes are in order by longitude from west to east, except that:</div> <div>(a) Zone 2 is split into Mainland, Middle, and Island Side</div> <div>(b) any extra/new marks may be at the end of their Zones</div>				
3V	West Bramble	YBY	50 47.20	01 18.65					
3W	Williams Shipping	Y	50 47.20	01 18.55					
3X	Island Sailing Club	Y	50 46.10	01 18.43					
3Y	West Knoll	Y	50 47.43	01 17.84					
3Z	Trinity House Buoy	Y	50 46.31	01 17.75					
30	RORC	Y	50 47.12	01 17.72					
31	South Bramble	G	50 46.98	01 17.72					
32	Snowden	Y	50 46.20	01 17.75					
33	Prince Consort	BY	50 46.41	01 17.56					

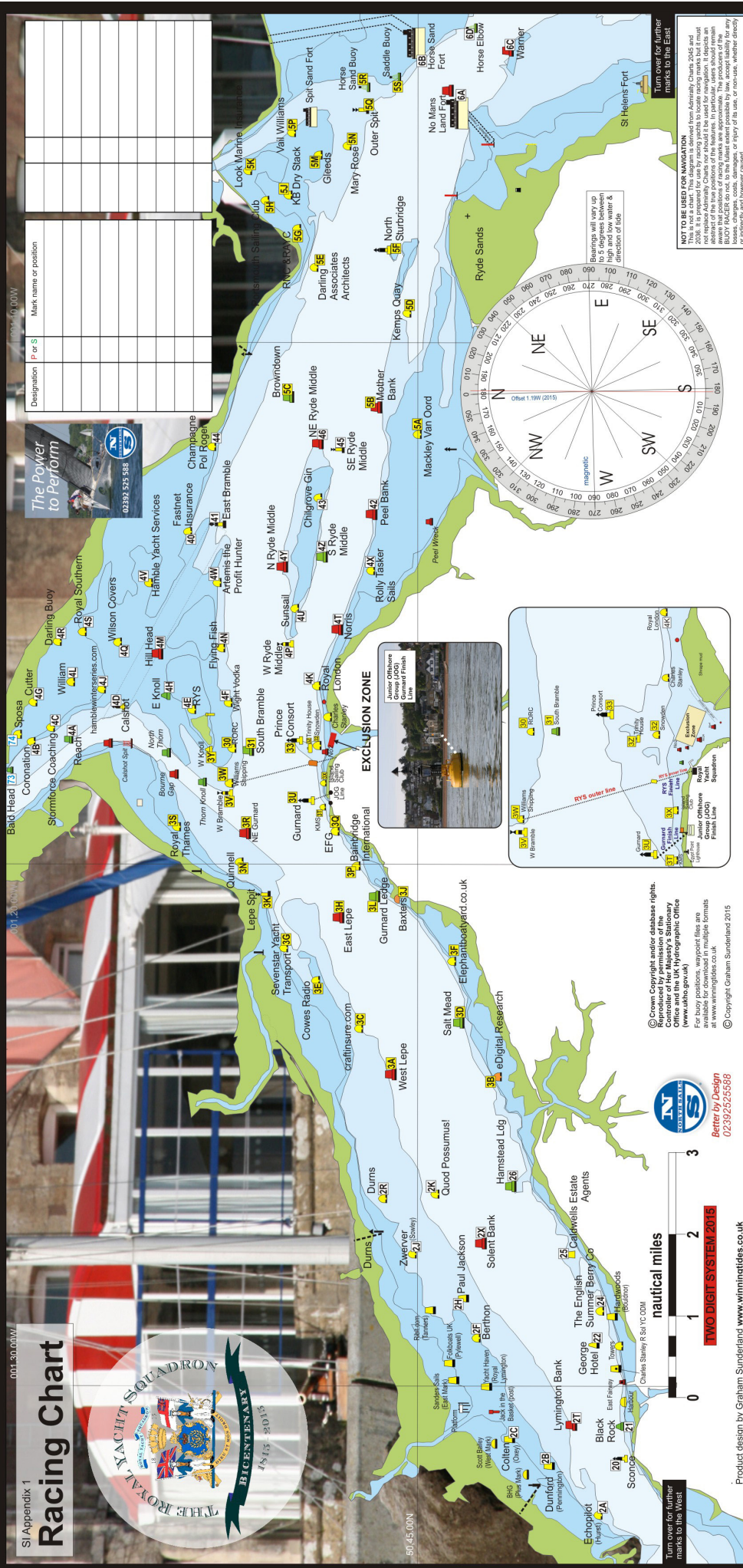
SOLENT MARK CODES 2015 - IN ZONES

Zone 6 Eastern Approaches					Zones 8/9 Laid Marks and Local Marks				
ID	Name	Colour	Lat N	Long W	ID	Name	Colour	Lat N	Long W
6A	No Man's Land Fort	B	50 44.40	01 05.70	8A	Windward Laid Mark			
6B	Horse Sand Fort	B	50 45.01	01 04.34	8B	Windward Spreader Mark			
6C	Warner	R	50 43.87	01 03.99	8C	Leeward Laid Mark			
6D	Horse Elbow	G	50 44.26	01 03.88	8D	Leeward Spreader Mark			
6E	West Princessa	YBY	50 40.16	01 03.65	8E	Leeward Gate			
6F	Bembridge Ledge Buoy	BYB	50 41.15	01 02.81	8F	Middle Gate			
6G	St Helens Buoy	R	50 43.36	01 02.41	8G	Wing Mark			
6H	Dean Elbow	G	50 43.69	01 01.88	8H	Outer Distance Mark			
6J	Nab East	R	50 42.86	01 00.80	8J				
6K	Horse Tail	G	50 43.23	01 00.23	8K				
6L	Winner	YB	50 45.10	01 00.10	8L				
6M	Nab End	R	50 42.63	00 59.49	8M				
6N	Dean Tail	G	50 42.99	00 59.17	8N				
6P	New Grounds	BYB	50 41.84	00 58.49	8P				
6Q	(spare)				8Q				
6R	Nab Tower	B	50 40.08	00 57.15	8R				
6S	Outer Nab No 2	BYB	50 38.43	00 57.70	8S				
Zone 7 Southampton Water					8T				
7A	Gymp	R	50 53.17	01 24.30	8U				
7B	Hythe Knock	R	50 52.83	01 23.81	8V				
7C	No 1 Swinging	G	50 53.00	01 23.44	8W				
7D	Weston Shelf	G	50 52.71	01 23.26	8X				
7E	Hythe 5	Y	50 52.24	01 23.18	8Y				
7F	Jib	Y	50 52.96	01 23.06	8Z				
7G	Hythe 4	Y	50 52.19	01 23.10	80				
7H	Moorhead	G	50 52.55	01 22.90	81				
7J	Deans Elbow	R	50 52.16	01 22.76	82				
7K	NW Netley	G	50 52.31	01 22.73	83				
7L	(spare)				84				
7M	Bird Pile	R	50 51.72	01 22.33	85				
7N	Royal Southampton	Y	50 51.76	01 22.28	86				
7P	Hovercraft 3	Y	50 52.43	01 22.01	87				
7Q	Netley	G	50 52.03	01 21.81	88				
7R	Lains Lake	R	50 51.59	01 21.65	89				
7S	Deans Lake	R	50 51.40	01 21.59	9A				
7T	Hovercraft 2	Y	50 52.21	01 21.58	9B				
7U	Hound	G	50 51.68	01 21.52	9C				
7V	Hovercraft 1	Y	50 51.99	01 21.16	9D				
7W	After Barn	G	50 51.53	01 20.82	9E				
7X	Hamblecliff	B	50 51.28	01 20.55	9F				
7Y	Cadland	R	50 51.02	01 20.54	9G				
7Z	Greenland	G	50 51.11	01 20.38	9H				
70	Cathead	Y	50 50.61	01 19.24	9J				
71	Mark	Y	50 49.56	01 18.94	9K				
72	Hamble Point	YB	50 50.15	01 18.66	9L				
73	Bald Head	G	50 49.80	01 18.07	9M				
74	Sposa	Y	50 49.66	01 17.59	9N				
75	Magazine	Y	50 52.83	01 23.98	9P				
					9Q				
					9R				
					9S				
					9T				
					9U				
					9V				
					9W				
					9X				
					9Y				
					9Z				
					90				

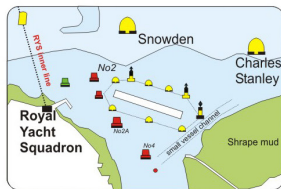
25 March 2015

Mark codes are in order by longitude from west to east, except that:
 (a) Zone 2 is split into Mainland, Middle, and Island Side
 (b) any extra/new marks may be at the end of their Zones

Racing Chart



Product design by Graham Sunderland www.winningatides.co.uk



Race Around The Island

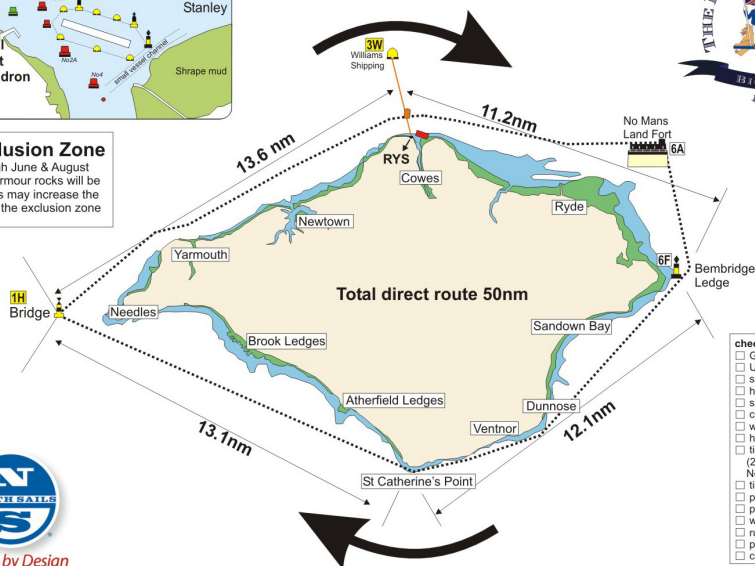


Exclusion Zone

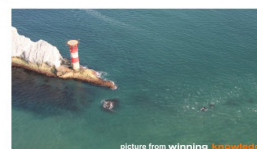
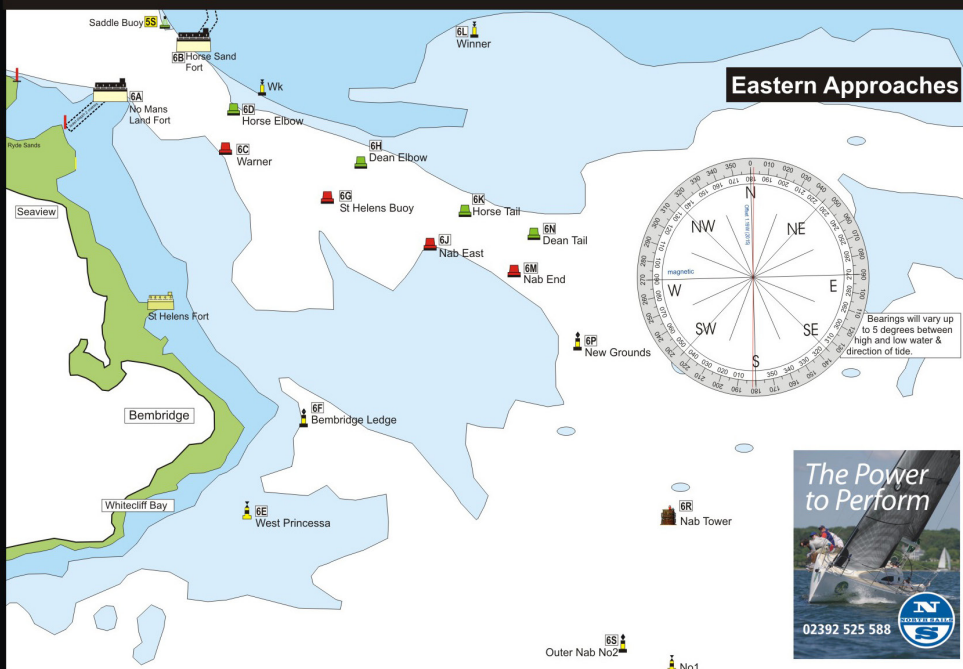
Through June & August 2015 armour rocks will be laid this may increase the size of the exclusion zone



Better by Design



- check list**
- ☐ GPS hand held
 - ☐ Up to date waypoints on GPS
 - ☐ spare batteries
 - ☐ hand held VHF
 - ☐ sailing instructions
 - ☐ charts 2045 2035 2036
 - ☐ wet note pad
 - ☐ high water times
 - ☐ tidal height curve (2 metres less at The Needles than PORTSMOUTH)
 - ☐ tide book
 - ☐ pencil
 - ☐ pvc tape
 - ☐ watch
 - ☐ rule book
 - ☐ protest flag
 - ☐ class flag





APPENDIX 2 CHC Local Notice to Mariners



LOCAL NOTICE TO MARINERS No 05(T) of 2015

BREAKWATER EXCLUSION ZONE BUOYAGE AND BREAKWATER WORKS

(This notice supersedes Local Notice to Mariners No 27(T) of 2014 which is hereby cancelled)

Notice is hereby given that works on the new detached breakwater have been completed for the winter period. Work is expected to recommence in late spring 2015, which will involve the reshaping of the breakwater gravel core and the placement of rock armour. An Exclusion Zone remains in force which is marked as follows:

Latitude (N)	Longitude (W)	Buoy	Light
50 46.068	01 17.743	N. Cardinal	VQ
50 46.059	01 17.682	Yellow Special Mark	Fl.Y.4s
50 46.049	01 17.604	Yellow Special Mark	Fl.Y.4s
50 46.040	01 17.544	N. Cardinal	VQ
50 45.978	01 17.456	E. Cardinal	Fl.VQ.3
50 45.942	01 17.533	Yellow Special Mark	Fl.Y.4s
50 45.960	01 17.683	Yellow Special Mark	Fl.Y.4s
50 45.974	01 17.800	Yellow Special Mark	Fl.Y.4s
50 46.025	01 17.836	Breakwater West Red lateral	Fl.R.2s
50 46.057	01 17.805	Yellow Special Mark	Fl.Y.4s

Table 1: Exclusion Zone Navigation Marks, Positions and Characteristics

In addition, the breakwater is marked with 5 yellow lights mounted on yellow special mark beacons. A yellow special mark is also in place marking the eastern toe of the breakwater as follows:

Table 2: Breakwater Marks, Positions and Characteristics

Latitude (N)	Longitude (W)	Buoy or Beacon	Light/s
On Breakwater	On Breakwater	5 x Yellow Special Mark Beacons	Fl.Y.5s
50 45.982	01 17.514	Yellow Special Mark (Breakwater East)	Fl.Y.2s

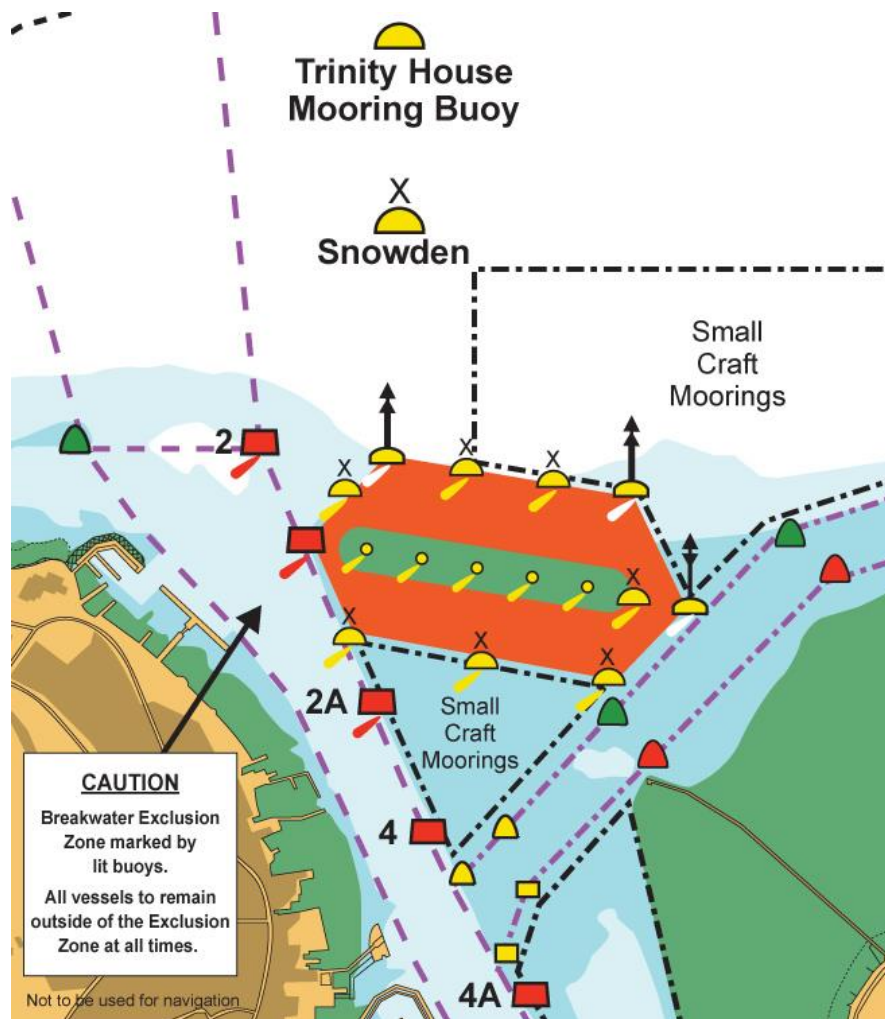


Fig 1: Stage 7 Exclusion Zone winter 2014/15

All vessels are reminded that they must stay outside of the Exclusion Zone at all times. Contravening the Exclusion Zone is a breach of the [Cowes Harbour General Direction 10](#).

Harbour users are also recommended to familiarise themselves with the contents of [L Notice to Mariners: Changes to Tidal Flows within Cowes Harbour](#).

A new Notice to Mariners will be issued prior to any further changes in the Exclusion Zone or associated works.

This Local Notice to Mariners remains in force until further notice.

R Hodgson

Deputy Harbour Master, Harbour Office, Town Quay, Cowes, Isle of Wight, PO31 7AS

Email: chc@cowes.co.uk

Internet: www.cowesharbourcommission.co.uk

7th January 2015



APPENDIX 3
ABP Notice to Mariners



NOTICE TO MARINERS

No 36(T) of 2015

Port of Southampton –
Royal Yacht Squadron Bicentenary International Regatta
27th – 31st July 2015

NOTICE IS HEREBY GIVEN jointly by the Harbour Master ABP Southampton, the Queen's Harbour Master Portsmouth and the Cowes Harbour Master that the Royal Yacht Squadron (RYS) is celebrating its Bicentenary and will be holding an International Regatta and a number of other events in the Central Solent off Cowes, and in the wider Eastern and Western Solent, over the period 27th – 31st July 2015.

Up to 25 yacht clubs and up to 100 yachts will be taking part in the Regatta, with competitors including modern and classic boats racing under IRC, team racing in J/70 boats, Corinthian one-design class racing in Beneteau F40s and (currently) up to 3 J Class yachts. Additionally, some competitors will have just completed the 2015 Transatlantic Race, from Newport, Rhode Island and are expected to arrive in Cowes in time for the Regatta.

Starts for the larger classes will be conducted from the RYS start line and to facilitate these a large, yellow, cylindrical, inflatable mark, 'Alpha', will be laid in the approaches to Cowes Harbour, as follows:

'Alpha' – 4.0 cables West South West (254° True) of Prince Consort Buoy, position 50°46'.29N, 01°18'.13W. The buoy will have a yellow light, flashing every 5 secs.

Racing will take place daily on Monday 27th, Tuesday 28th, Thursday 30th and Friday 31st July from 0900 until 1600, with IRC classes starting from the RYS Line at 1030. The level rating event for the 10 Beneteau Farr 40s will take place between laid marks in The Eastern Solent. It is intended that courses within The Solent will be set to ensure no conflict between the different participating classes. Events will also include a 'Race Around the Island', eastabout, on Wednesday 29th July from 0800 to 2100.

As per the International Regulations for Preventing Collisions at Sea 1972 (as amended), the normal steering and sailing rules will apply to all competing yachts. Notwithstanding, when racing, to take into account the potential difficulties of manoeuvring J Class and similar sized classic yachts in the congested waters of The Solent, a 'Moving Safety Zone' (MSZ) will be established around each yacht. This MSZ will be centred on each yacht and will extend for 200 metres in all directions. It will apply to the yachts throughout the Central Solent (south of Calshot), Eastern and Western Solent and all craft are to avoid entering the MSZs at all times. The only craft

exempt this prohibition are the yachts' own safety RIBs, allocated RYS safety RIBs, other yachts competing in the same class, an Umpire boat and authorized J Class press boats flying J Class flags. Additionally, RYS RIBs may be stationed at the race turning marks.

Mariners should always consider the manoeuvrability of these large yachts when determining if a risk of collision exists.

Mariners should consult the RYS websites (www.rys.org.uk or www.bic2015.org.uk) for specific details on the Regatta and should contact Southampton VTS on VHF Channel 12 or on 02380 608208 to confirm timings for commercial movements in the normal manner.

This Notice to Mariners will be self-cancelling on completion of the event, on Saturday 1st August 2015.

**Vessel Traffic Services Centre
Berth 37, Eastern Docks
Southampton**

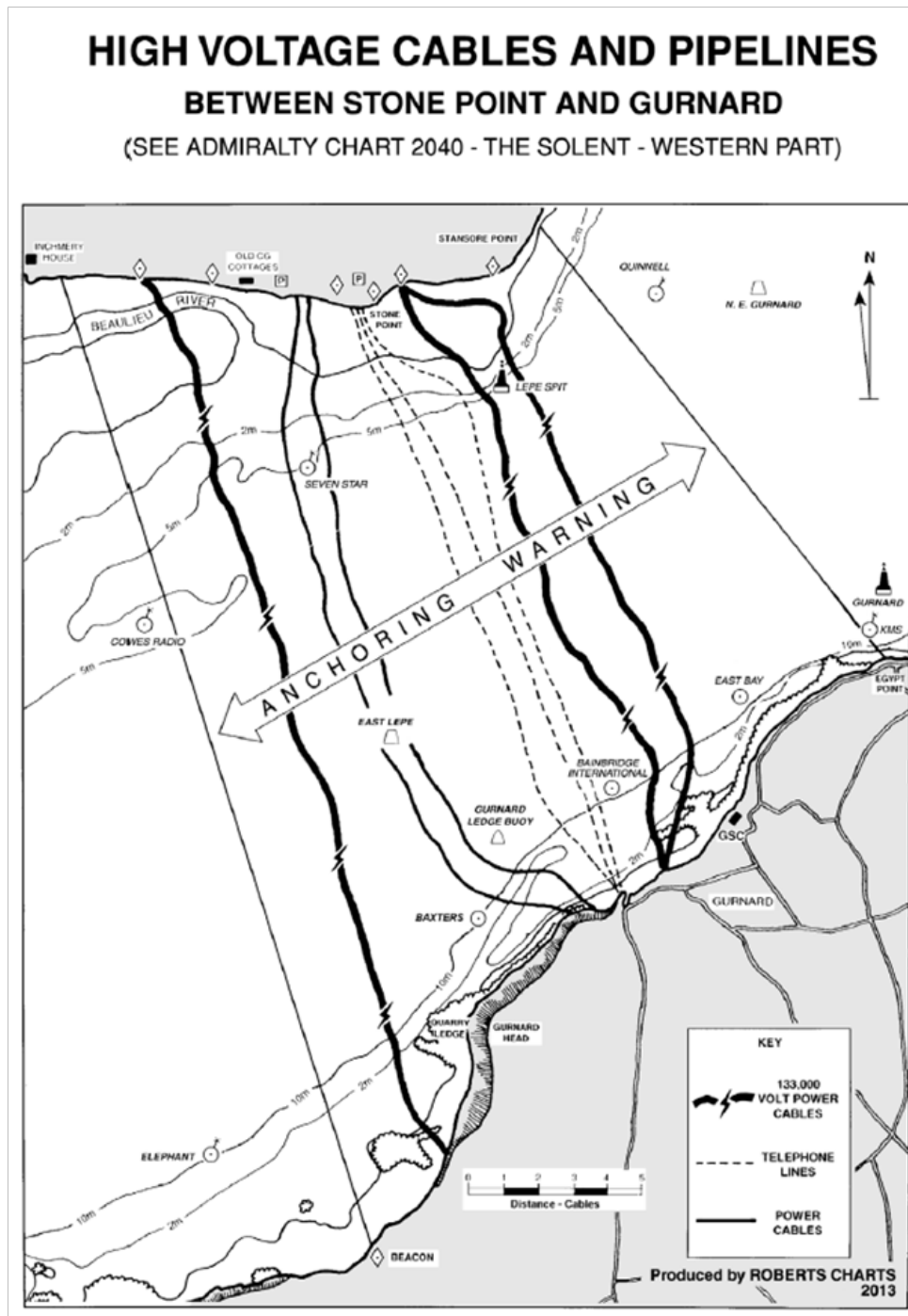
**Captain M Phipps
Harbour Master**

3rd July 2015

**Owners, Agents, Charterers, Marinas, Yacht Clubs and Recreational Sailing
Organisations should ensure that the contents of this Notice are made known to
the masters or persons in charge of their vessels or craft.**

APPENDIX 4

High Voltage Cables and Pipelines

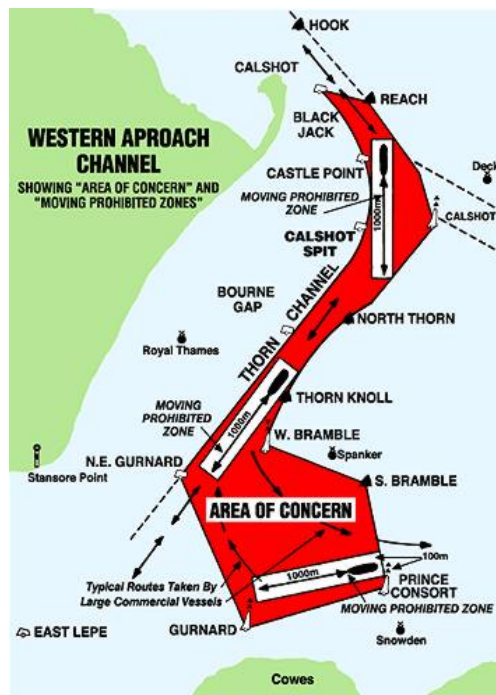




APPENDIX 5 Southampton Harbour Bylaws

Southampton Harbour Bylaws

Yachts shall observe the Associated British Ports (ABP) Southampton Harbour Bylaws 2003 (see below) at all times and avoid any close quarters situation with large commercial shipping. Particular note should be made of Byelaws 10 & 11 and Associated British Ports Southampton Notice to Mariners No. 3 of 2011 giving details of a moving prohibited zone, shown below, which ranks as an obstruction for the purposes of RRS 19 and 20.



An **Area of Concern** is established in the Western Approach and Thorn Channels, shown on charts as **Entry Restricted**. Every vessel over 150m LOA in this area has around it a **moving prohibited zone** 1000m ahead and 100m either side. Vessels under 20m LOA shall not enter a **moving prohibited zone**.

Vessels over 150m will display by day a black cylinder, by night 3 all-round red lights in a vertical line and may be preceded by a Southampton Harbour Patrol launch (call sign "SP" on VHF 12) showing a blue flashing light.

Southampton Vessel Traffic Services Centre (call sign "VTS") broadcasts hourly information on VHF 14, these broadcasts are made only between Easter and the end of October.