



**RYS Bicentenary Regatta J Class Event
including the Race Around the Island (or Alternative Course Long Inshore Race)**

COWES, ISLE OF WIGHT

25 to 31 July 2015

SAILING INSTRUCTIONS

To be read in conjunction with the Useful Information Document

ORGANISING AUTHORITY:

ROYAL YACHT SQUADRON RACING

THE CASTLE
COWES
ISLE OF WIGHT
PO31 7QT

TEL: + 44 (0)1983 292191

FAX: + 44 (0)1983 200253

mail@rys.org.uk

www.bic2015.org.uk

Times of High Water Portsmouth (HWP)
All times UTC + 1 hour

Monday 27 July	0845
Tuesday 28 July	1002
Wednesday 29 July	1049
Thursday 30 July	1130
Friday 31 July	1210

1. REGATTA OFFICE

The Regatta Office will be located at Regatta House, 18 Bath Road, Cowes tel +44 (0)1983 295744
www.bic2015.org.uk

2. RULES

2.1 Racing will be governed by:

- a) The rules as defined in the Racing Rules of Sailing (RRS) 2013 – 2016
- b) The J Class Rules, including a modified ISAF Addendum Q (attached), Umpired Fleet Racing, will apply and takes precedence over any conflicting instructions.
- c) In the event of a discrepancy between the Notice of Regatta and its Annexes and the Sailing Instructions, the Sailing Instructions will take precedence. This changes RRS 63.7.
- d) The prescriptions of the Royal Yachting Association will not apply.
- e) Anchors shall not be carried on deck such that they protrude forward of the stem.

2.2 Boat Captain

2.2.1 Yachts will not be required to have a designated safety officer.

2.2.2 The boat captain's primary responsibility while racing will be collision avoidance, the safe manoeuvring of the yacht and communicating with other J Class yachts on VHF Channel 6 (VHF Channel 8 as standby). The boat captain should have no other responsibility above and beyond these safety related matters. The boat captain shall have a handheld VHF radio in their possession from the time the yacht approaches the starting area until departing the finishing area following the race and shall answer any and all hails in a timely manner.

3. NOTICES TO COMPETITORS

3.1 Notices to competitors will be posted on the Official Notice Board at the Regatta Office and on the Regatta Website at www.bic2015.org.uk

4. CHANGES TO SAILING INSTRUCTIONS

4.1 Any changes to the Sailing Instructions after those available at registration will be posted at the Regatta Office and on the Regatta website www.bic2015.org.uk at least two hours before the advertised warning signal of the race or races concerned. Code flag 'L' over the relevant numeral pennant(s) will be displayed from the RYS Lodge flagstaff and the change may also be announced on VHF Channel 5 immediately following the daily time check (see SI 6.3). It is the responsibility of each yacht to obtain any such changes from the Regatta Office or the Regatta website.

5. SIGNALS MADE ASHORE

5.1 Signals made ashore will be displayed at the Royal Yacht Squadron (RYS) main flagstaff.

5.2 Flag 'AP' over 'AP' with two sound signals means all racing is postponed indefinitely and crews are advised not to go afloat. The first warning signal will be made not less than 50 minutes after the removal of AP over AP, at a time which will be announced on VHF Channel 5. The removal of this signal with one sound signal may be followed by a single 'AP'. This adds to RRS 27.3 and Race Signals.

6. SCHEDULE

The Organising Authority reserves the right to alter the schedule of races. Any such change will be posted by 2000 on the day before it will take effect.

6.1 Registration

This will take place at the Regatta Office from 0800-1730 on Saturday 25 and Sunday 26 July.

6.2 Mandatory Skippers' Briefing

This will take place at 1730 on Sunday 26 July in the RYS Pavilion, followed by the Opening Reception at 1830. Either the skipper and or the navigator from each yacht will be asked to sign in at the briefing.

6.3

The Race Committee will transmit a time check at 0900 daily (0700 on Wednesday 29 July) on VHF Channel 5. This will be followed by direction of start and other race management information, including but not limited to postponements, and other Race Committee intentions. Failure to make a broadcast or to time it accurately or to receive such transmissions will not be grounds for redress. This changes RRS.

6.4

At or before 2000 on Tuesday 28 July, the Race Committee will announce its intention regarding the race to be sailed on Wednesday 29 July, which will either be the scheduled Race Around the Island (RATI) or an alternative Long Inshore Race, depending on anticipated weather conditions. The announcement will be posted on the Official Notice Board and Regatta Website www.bic2015.org.uk. Confirmation of the style of race and course to be sailed will be made in announcements on VHF Channel 5, commencing at 0700 on Wednesday 29 July. The announcement will be posted at the Regatta Office and on the Regatta website www.bic2015.org.uk

6.5

The Prize Giving Ceremony will take place at the RYS Pavilion at 1730 on Friday 31 July.

6.6 Schedule of Races

Date	Time	Event
Saturday 25 and Sunday 26 July	0800-1730	Registration at the Regatta Office
Sunday 26 July	1730 1830	Skippers briefings at RYS Opening ceremony at RYS
Monday 27 July Race 1	0900 1020	Race Committee time check and announcements First Warning Signal
Tuesday 28 July Race 2	0900 1020 2000	Race Committee time check and announcements First Warning Signal Announcement concerning Race Committee intentions re Race Around the Island or alternative Long Inshore Race see SI 7.1 above

Wednesday 29 July Race 3 RATI	0700	Time check
	0755	First Warning Signal of the Race Around The Island or alternative Long Inshore Race
	0920	J Class Warning Signal
Thursday 30 July Race 4	0900	Race Committee time check and announcements
	1020	First Warning Signal
Friday 31 July Race 5	0900	Race Committee time check and announcements
	1020	First Warning Signal
	1730	Prize Giving ceremony at the RYS

7. CLASS FLAG

7.1 The Class Flag is shown below:-



8. RACING AREA

- 8.1 The Racing Area is the waters surrounding the Isle of Wight, shown in SI Appendix 1.
- 8.2 All yachts shall remain clear of the Level Rating Event which will take place with daily racing (with the exception of Wednesday 29 July) on a windward leeward course set in the Eastern Solent and also the Team Racing Event, which will either take place in Osborne Bay to the East of Cowes Harbour or Thorness Bay to the West.

9. NAVIGATION RESTRICTIONS

- 9.1 All yachts shall comply with Associated British Ports Notice to Mariners No 3 of 2014 giving details of a Moving Prohibited Zone, which shall rank as an obstruction for the purposes of rules 19 and 20.
- 9.2 Yachts, in whatever direction they are racing, shall not pass:
- North of the barrier off Durns Point east of Lymington
 - North of Horse Sand Fort
 - South of No Man's Land Fort
- 9.3 Yachts shall not anchor or kedge in the Cowes Harbour fairway and in the area between Stone Point and Gurnard Bay as indicated on the racing chart in these Sailing Instructions (Appendix 1) and on Admiralty Chart 2040. Gas and water pipes, telephone and electricity cables carrying 133,000 volts lie on the sea bed.
- 9.4 Yachts shall not enter the exclusion zone protecting the construction area around the new outer harbour breakwater. This is shown diagrammatically in the local Cowes Harbour Commission Notice

to Mariners see SI Appendix 2. In whichever direction they are racing, yachts shall pass north of Cowes Harbour Number 2 buoy and all buoys marking the exclusion zone. The exclusion zone shall rank as an obstruction for the purposes of RRS 19 and 20.

- 9.5 All yachts shall observe Associated British Ports Notice to Mariners No 36 (T) of 2015 (See SI Appendix 3) giving details of Moving Safety Zones established around competing J Class and large classic yachts.
- 9.6 Protests for infringements of ABP and CHC Bye Laws, General Directions and Notices to Mariners may be brought only by the Race Committee or International Jury who may initiate a protest as the result of a report from the vessel affected or one made by either ABP or CHC staff. This changes RRS 60.

10. THE COURSES

10.1 Course Marks

- 10.1.1 For the Race Around the Island on Wednesday 29 July (if sailed – see SI 6.4), the course will be: Start, pass between No Man's Land and Horse Sand Forts, Bembridge Ledge Buoy to Starboard, St Catherine's Point to Starboard, Bridge Buoy to Starboard, Gurnard Buoy to Starboard, to Finish on the Royal Yacht Squadron Line (see SI 17.1.1 below).
- 10.1.2 For all other races, including the alternative Long Inshore Race (see SI 6.4), fixed navigation buoys and racing marks that may be used have been allocated two character identifying buoy codes as shown in the SI Appendix 1 Racing Chart issued at registration.

- 10.2 The course to be sailed will be broadcast by the Race Committee (call sign: Castle One) on VHF Channel 5 after the Warning Signal and as soon as possible after the Preparatory Signal, and similarly will be repeated by the Race Committee (call sign Castle Two) in order to confirm that the course broadcast was correctly transmitted. There will be no visual course signals. This changes RRS 27.1. On Wednesday 29 July, additional announcements regarding the course to be sailed will be made at regular intervals, starting at 0700
- 10.3 Unless on the first leg of her course having started to the West a yacht shall not pass through any finishing line unless it is a mark of the course or she is finishing.

11. MARKS

- 11.1. Starting and Finishing Marks are as described in SI Appendix 3

12. THE START

- 12.1 Races will be started using rule 26 with the warning signal made ten minutes before the starting signal. Yachts shall start on the RYS outer line (see SI's 12.3 and 12.4 below).
- 12.2 The start sequence countdown will be announced on the VHF Channel 5, accompanied by sound signals and signal flags displayed from the RYS yardarm. Failure or delay in any transmission will not be grounds for redress. This changes RRS 62.1(a).
- 12.3 The RYS starting line which consists of an Inner and Outer line (see SI Appendix 3) is an extension of the line formed by the RYS Main flagstaff and the white line on the orange diamond on the Castle, limited by inner and outer marks, which rank as starting marks.
- 12.4 The starting line is on a bearing of approximately 347° (T) from the RYS flagstaff. The limit marks are Williams Shipping buoy to the north and a large, yellow, cylindrical, Inflatable mark, 'Alpha',

approximately 1700m to its south. Williams Shipping buoy and 'Alpha' may not be precisely on the starting line transit. A committee vessel may be on station to the North of Williams Shipping.

12.5 Direction of start:

12.5.1 The Race Committee will announce the intended direction of start at the daily time check see SI 6.3. Not less than fifteen minutes before the start of each race, a signal displayed at the RYS Lodge flagstaff will indicate the direction of the start. A red flag indicates starting to the East. A green flag indicates starting to the West.

12.5.2 After a postponement this signal may be changed to reverse the direction of subsequent starts.

12.6 Yachts shall not start later than ten minutes after their valid starting signal. If a yacht has a genuine reason for starting later than ten minutes after her valid starting signal she shall inform the Race Committee in writing, as soon as practicable after finishing, including in full the circumstances and reasons for the late start. The Race Committee will consider whether a penalty is applicable. This SI shall not be ground for protest by another yacht. This changes RRS 60.1.

13. OBSTRUCTING THE STARTING LINE

13.1 Yachts whose warning signal has not been made shall keep clear of the starting area and of all yachts whose warning signal has been made.

14. INDIVIDUAL RECALL

14.1 Identification of recalled yachts may be announced on VHF Channel 5.

15. GENERAL RECALL

15.1 General recalls will be announced on VHF Channel 5 followed as soon as practicable by the time of the new warning signal.

16. SHORTENING COURSE

16.1 Courses may be shortened at any mark. If a committee vessel on station is displaying code flag S (with a class flag or class flags), yachts of the indicated class or classes shall finish between the orange flag on the committee vessel and the nearby mark from the direction of the last mark. This adds to RRS 32.

17. THE FINISH

17.1 Unless shortened in accordance with SI 16, yachts shall finish either on the Royal Yacht Squadron Line (SI 17.1.1 below) or on the Gurnard Line (SI 17.1.2 below) (See SI Appendix 1)

17.1.1 The Royal Yacht Squadron Line will be between the RYS main flagstaff and 'Alpha' a large yellow cylindrical inflatable buoy approximately 500m north of the RYS Main Flagstaff

17.1.2 The Gurnard Line will be between the orange flag on the JOG hut mast (approximately 150 metres east of Egypt Point), and the course side of Gurnard Cardinal Mark.

17.2 Each yacht shall record her own finishing time and, if possible, the sail number or identification of the yacht immediately ahead and astern (irrespective of class) for each race. Each yacht shall complete a Declaration Form in accordance with SI 18 below.

18. DECLARATION and RETIREMENT

- 18.1 After every race, each yacht shall declare her finishing time or announce her retirement by one of the following methods:
- 18.1.1 By text message, as described in para 4.8 of the Useful Information Document within 30 minutes of her finishing time.
 - 18.1.2 By completing a paper declaration form at the race office as soon as soon as practicable after racing and no later than one hour after the time limit (see SI 20).
 - 18.1.3 For retirements **only**, by informing the Race Committee as soon as possible on VHF Channel 77.
- 18.2 A yacht that fails to make a declaration in accordance with SI 18.1.1 or 18.1.2 may, within 24 hours of the time limit specified in SI 18.1.2, complete a late declaration form at the Regatta Office stating that the boat sailed the course correctly and complied with all relevant rules. In this case, the yacht will be given a penalty of 4% of her elapsed time.

19. PENALTY SYSTEM WHEN A J CLASS YACHT MEETS A YACHT FROM ANOTHER CLASS IN THE REGATTA

- 19.1 RRS 44 will not apply. A yacht that may have broken a rule of part 2 while racing or that has broken RRS 31 may take a Time Penalty unless she has caused serious damage or gained a significant advantage in the race or regatta in which case she shall retire. The Time Penalty will be to add 2% of her elapsed time to her elapsed time, rounding the increased time to the nearest second.
- 19.2 A yacht that intends to take a time penalty shall display a yellow flag at the first reasonable opportunity and keep the flag displayed until she has finished. At her finish she shall inform the Race Committee on VHF Channel 77 that she is taking the penalty.
- 19.3 A yacht that takes a penalty shall not be penalized further with respect to the same incident unless she failed to retire when this Sailing Instruction required her to do so.
- 19.4 A yacht shall not be scored as having finished outside a time limit solely by the application of a Time Penalty.
- 19.5 A yacht involved in a protest who acknowledges an infringement of a rule of part 2 prior to the hearing shall receive a penalty of 4% of her elapsed time.

20. TIME LIMITS

- 20.1 With the exception of the races on Wednesday 29 July (see SI 20.2 below) and Friday 31 July (see SI 20.3 below), the time limit will be 60 minutes after the first valid finisher in each class, unless no yacht has finished by 1630 in which case the time limit will be 1730. This changes RRS 35, A4 and A5.
- 20.2 The time limit for the Race Around the Island or alternative Long Inshore Race will be 2100 for all classes.
- 20.3 The time limit for all races on Friday 31 July will be 1530.
- 20.4 Yachts not finishing within the Time Limit will be scored Did Not Finish (DNF). This changes RRS 35, A4 and A5.

21. PROTESTS AND REQUESTS FOR REDRESS WHEN A J CLASS YACHT MEETS A YACHT FROM ANOTHER CLASS IN THE REGATTA

21.1 When a J Class yacht has an incident with a yacht from another class, Addendum Q does not apply and Rule 61.1 is changed:

Delete ' She shall display the flag until she is no longer racing' and insert ' She shall display the flag until she is no longer racing or until the umpires acknowledge her flag by displaying the J flag'.

21.2 The protest time limit is 2 hours after the last yacht in the protestor's class has finished racing except on Friday 31 July when the protest time limit is 1 hour after the last yacht in the protestor's class has finished racing. The same time limit applies to protests by the Race Committee about incidents they observe in the racing area and to requests for redress. This changes RRS 61.3 and 62.2.

21.3 Notices will be posted on the Official Notice Board, within 30 minutes of the protest time limit to inform competitors when there is a hearing in which they are parties to a hearing or named as witnesses. Notices of protests by the Race Committee will be posted on the Official Notice Board to inform yachts under RRS 61.1. These notices will be considered as notification under RRS 63.2.

21.4 Hearings will be at the Regatta Office. The earliest time at which a hearing will start will be stated on the notice and parties should be available and in the vicinity of the room at which the hearing will be held with any required witnesses

21.5 For infringements of rules other than rules of Part 2 the International Jury may impose a penalty other than disqualification or decide not to impose a penalty.

21.6 Decisions of the International Jury will be final as provided in RRS 70.5

21.7 On the last day of racing a request for reopening a hearing shall be delivered

- (a) within the protest time limit if the party requesting reopening was informed of the decision on the previous day;
- (b) no later than 30 minutes after the party requesting reopening was informed of the decision on that day.

This changes RRS 66.

22. USE OF ENGINES AND THRUSTERS

22.1 For safety reasons, yachts may run their engines in neutral at any time during the race. Engines may be put into gear and thrusters may be used at any time during the race for a yacht to take action in order to avoid collision.

22.2 A yacht that puts her engine in gear or uses her thruster at any time while racing shall submit a written declaration of "engine use" to the International Jury as soon as practical after racing, stating the time the engine was in gear or thruster used, the reason for using it, the duration of use and any potential competitive advantage realized.

22.3 The International Jury will review all declarations on engine and thruster use to determine whether use was appropriate and what, if any, penalty to award.

23. REPLACEMENT OF CREW OR EQUIPMENT

23.1 There is no restriction on the replacement of crew or equipment.

24. EQUIPMENT AND MEASUREMENT CHECKS

- 24.1 The J Class Measurer may inspect or measure any yacht or personal equipment at any time for compliance with the Class Rules

25. OFFICIAL BOATS

- 25.1 Official boats will be identified as follows:

Umpire: White flag with black 'U'

Marshal: White flag with blue 'J Class and yellow flag marked 'MARSHAL'

26. SUPPORT BOATS

- 26.1 J Class support boats shall fly a J Class flag and shall register with the Organising Authority at Registration

27. TRASH DISPOSAL

- 27.1 Bio degradable wool ties used in the course of setting a sail will not be considered as trash. This changes RRS 55.

28. RADIO COMMUNICATIONS

- 28.1 All yachts shall be equipped with VHF Channels 5, 6, 8, 12 and 77. The Race Committee (call sign 'Castle One') will make course and other race management announcements on VHF Channel 5. Yachts are requested to listen on this channel from 0900 daily and from 0700 on Wednesday 29 July until after finishing and leaving the race area. Yachts shall not transmit on VHF Channel 5. Yachts wishing to transmit to the Race Committee shall do so on VHF Channel 77.
- 28.2 For any regatta channel communication failure, yachts are requested to listen out on VHF Channel 16.
- 28.3 Having departed Cowes J Class are requested to maintain a listening watch on Southampton VTS VHF Channel 12, used by Southampton Harbour Patrol launch (call sign "SP") showing a blue flashing light and escorting large commercial vessels through the Precautionary Area.
- 28.4 Yachts may make an all stations advisory call on VHF Channel 69, the Cowes working channel, when departing or arriving in Cowes. All Red Funnel ferries and high speed catamaran ferries maintain a listening watch on this channel.

29. TRACKING

- 29.1 All yachts shall carry two TracTrac tracking units for the duration of the event.
- 29.2 The tracking units will be available at registration. Tracking units shall be returned to the Regatta Office before the prize giving at 1730 on Friday 31st July.

30. SCORING

- 30.1 As soon as practicable after rounding the last mark of the course and before the finish, yachts shall declare the average windspeed (seen at masthead) for the duration of the race up until that time. The declaration shall be to the Race Committee on VHF Channel 77. If that transmission is not acknowledged, then average windspeed shall be recorded and submitted to the Race Committee as soon as possible after racing. The use of the data submitted by boats will be used to calculate the

appropriate handicap system for the race at the discretion of the Race Committee. This process will not be grounds for redress. This changes RRS 62.1(a).

- 30.2 Race scores will be calculated using the JCA handicap system. Towards the end of each race (usually when boats are on the last leg) the Race Committee will broadcast on VHF Channel 5 details of the defined conditions to be used in the calculation. The 'defined conditions' is at the discretion of the Race Committee and will not be grounds for redress. This changes RRS 62.1(a). Failure to receive the broadcast will not be grounds for redress. This changes RRS 62.1(a).
- 30.3 One race is required to be completed to constitute a series.
- 30.4 If four or more races are completed in a series, a yacht's series score will be the total of her race scores excluding her worst score. If fewer than four races are completed in a series, a yacht's series score will be the total of her race scores. The Race Around the Island or Long Inshore Race will not be discarded.
- 30.5 Any race abandoned due to failure of any yacht to finish within the time limit race will not be re-sailed.

31. RESULTS

Results will be posted on the Official Notice Board and on the Regatta Website www.bic2015.org.uk

32. PRIZES

Prizes will be awarded to the first, second and third placed yachts scored on the basis of the Low Points System as amended by SI 30.1 above. This changes RRS Appendix A. A prize will also be awarded to the first placed yacht in the Race Around The Island or Alternative Long Inshore Race .

33. INDEMNITY

Rule 4 of the Racing Rules of Sailing states: "The responsibility for a boat's decision to participate in a race or to continue racing is hers alone."

Sailing is by its nature an unpredictable sport and therefore involves an element of risk. All those taking part should be fully aware and conscious of the actual and potential risks involved in active watersports. By taking part in the event, each competitor agrees and acknowledges that:

- a) They are aware of the inherent element of risk involved in the sport and accept responsibility for the exposure of themselves, their crew and their boat to such inherent risk whilst taking part in the event;
- b) They are responsible for the safety of themselves, their crew, their boat and their other property whether afloat or ashore;
- c) They accept responsibility for any injury, damage or loss to the extent caused by their own actions or omissions;
- d) Their boat is in good order, equipped to sail in the event and they are fit to participate;
- e) The provision of a race management team, patrol boats, umpires and other officials and volunteers by the organiser does not relieve them of their own responsibilities;
- f) The provision of patrol boat cover is limited to such assistance, particularly in extreme weather conditions, as can be practically provided in the circumstances;
- g) They are responsible for ensuring that their boat is equipped and seaworthy so as to be able to face extremes of weather; that there is a crew sufficient in number, experience and fitness to withstand such weather; and that the safety equipment is properly maintained, stowed and in date and is familiar to the crew]; and
- h) Their boat is adequately insured against third party claims. For this Regatta the amount required for all competitors is not less than £2 million or equivalent.

List of SI Appendices

SI Appendix 1 Racing Chart and List of Course Marks and Symbols

SI Appendix 2 Cowes Harbour Commission Local Notice to Mariners 05(T) of 2015

SI Appendix 3 Associated British Ports Notice to Mariners No 36 (T) of 2015

SI Appendix 4 High Voltage Cables and Pipelines

SI Appendix 5 Southampton Harbour Bye laws

ADDENDUM Q TO SAILING INSTRUCTIONS

UMPIRED FLEET RACING

This addendum has been approved by ISAF in accordance with rule 86.2 and ISAF Regulation 28.1.3.

Version: - J Class-2015

These sailing instructions change the definition Finish, Proper Course, Start and rules 20, 28.2, 29, 30, 44, 60, 61, 62, 63, 64.1, 65, 66, 70 and 78.3.

Q1 CHANGES TO RACING RULES

Additional changes to rules are made in instructions Q2, Q3, Q4, and Q5.

Q1.1 Changes to the Definitions and the Rules of Parts 2, 3 and 4

(a) Add to the definition Proper Course: 'A boat taking a penalty or manoeuvring to take a penalty is not sailing a *proper course*.'

(b) When rule 20 applies, in addition to the hails, VHF notification on the designated channel and the following arm signals are required:

1. (1) for 'Room to tack', repeatedly and clearly pointing to windward; and
2. (2) for 'You tack', repeatedly and clearly pointing at the other boat and waving the arm to windward.

Q1.2 Changes to Rules Involving Protests, Requests for Redress, Penalties and Exoneration

- (a) The first sentence of rule 44.1 is replaced with: 'A boat may take a 270° Penalty when she may have broken a rule of Part 2 (except rule 14 when she has caused damage or injury) or rule 31 or 42 while racing.'
- (b) Rule 60.1 is replaced with 'A boat may protest another boat or request redress provided she complies with instructions Q2.1 and Q2.4.'
- (c) The third sentence of rule 61.1(a) and all of rule 61.1(a)(2) are deleted.
- (d) Rule 64.1(a) is changed so that the provision for exonerating a boat may be applied by the umpires without a hearing, and it takes precedence over any conflicting instruction of this addendum.

Q2 PROTESTS AND REQUESTS FOR REDRESS BY BOATS

Q2.1 While racing, a boat may protest another boat under a rule of Part 2 (except rule 14) or under rule 31; however, a boat may only protest under a rule of Part 2 for an incident in which she was involved. To do so she shall hail 'Protest', notify by VHF on the designated channel and conspicuously display a red flag at the first reasonable opportunity for each. She shall remove the flag before, or at the first reasonable opportunity after a boat involved in the incident has taken a penalty voluntarily or after an umpire's decision.

Q2.2 A boat that protests as provided in instruction Q2.1 is only entitled to a hearing if the umpires acknowledge her protest by displaying a "J" flag. A boat involved in the incident may acknowledge breaking a rule by taking a penalty as described in rule Q3.2(a). If the protested boat does not take a penalty voluntarily, an umpire will decide whether to penalize any boat and signal the decision as provided in instruction Q3.1.

Q2.3 At the finishing line the race committee will inform the competitors about each boat's finishing place or scoring abbreviation. After this has been done for all boats, the race committee will promptly display flag B with one sound. Two minutes later flag B will be removed with one sound.

Q2.4 A boat intending to

- (a) protest another boat under a rule other than instruction Q3.2 or Q4.2(a), or a rule listed in instruction Q2.1,
- (b) protest another boat under rule 14 if there was contact that caused damage or injury, or

- (c) request redress, or
- (d) protest a boat after the umpires have answered their protest with a "J" flag shall hail or inform the race committee before or during the display of flag B. The same time limit applies to protests under instructions Q5.4. The protest committee may extend the time limit if there is good reason to do so.

Q2.5 The race committee will promptly inform the protest committee about any protests or requests for redress made under instruction Q2.4.

Q3 UMPIRE SIGNALS AND IMPOSED PENALTIES

Q3.1 An umpire will signal a decision as follows:

- (a) A green and white flag with one long sound means 'No penalty.'
- (b) A red flag with one long sound means 'A penalty is imposed or remains outstanding.' The umpire will hail or signal to identify each such boat.
- (c) A black flag with one long sound means 'A boat is disqualified.' The umpire will hail or signal to identify the boat disqualified.
- (d) A "J" flag with one long sound signal means 'the umpires do not have the facts required to make a decision'.

Q3.2

- (a) A boat penalized under instruction Q3.1(b) shall take the penalty as follows:
 - (1) When her proper course is close hauled or above she shall gybe and, as soon as reasonably possible, luff to a close hauled course.
 - (2) When her proper course is below close hauled, she shall tack and, as soon as reasonably possible, bear away to a course that is more than 90 degrees from the true wind.
- (b) A boat disqualified under instruction Q3.1(c) shall promptly leave the course area.

Q4 PENALTIES AND PROTESTS INITIATED BY AN UMPIRE; ROUNDING OR PASSING MARKS

Q4.1 When a boat

- (a) breaks rule 31 and does not take a penalty,
- (b) breaks rule 42,
- (c) gains an advantage despite taking a penalty,
- (d) deliberately breaks a rule,
- (e) commits a breach of sportsmanship, or
- (f) fails to comply with instruction Q3.2 or to take a penalty when required to do so by an umpire, an umpire may penalize her without a protest by another boat. The umpire may impose one or more 270° penalties to be taken as described in rule 44.2, each signalled in accordance with instruction Q3.1(b), or disqualify her under instruction Q3.1(c), or report the incident to the protest committee for further action. If a boat is penalized under instruction Q4.1(f) for not taking a penalty or taking a penalty incorrectly, the original penalty is cancelled.

Q4.2 (a) A boat shall not round or pass a mark on the wrong side. If she does so, she may correct her error as provided in rule 28.2 only if she does so before she rounds or passes the next mark or finishes.

(b) When a boat breaks instruction Q4.2(a) and fails to correct her error before rounding or passing the next mark or finishing, an umpire may disqualify her under instruction Q3.1(c).

Q4.3 An umpire who decides, based on his own observation or a report received from any source, that a boat may have broken a rule, other than instruction Q3.2 or Q4.2(a) or a rule listed in instruction Q2.1, may inform the protest committee for its action under rule 60.3. However, he will not inform the protest committee of an alleged breach of rule 14 unless there is damage or injury.

- Q5 PROTESTS; REQUESTS FOR REDRESS OR REOPENING; APPEALS; OTHER PROCEEDINGS
- Q5.1 No proceedings of any kind may be taken in relation to any action or non-action by an umpire.
- Q5.2 A boat may not base an appeal on an alleged improper action, omission or decision of the umpires or the protest committee. In rule 66 the third sentence is changed to 'A party to the hearing may not ask for a reopening.'
- Q5.3
- (a) Protests and requests for redress need not be in writing.
 - (b) The protest committee may take evidence and conduct the hearing in any way it considers appropriate and may communicate its decision orally.
 - (c) If the protest committee decides that a breach of a rule has had no effect on the outcome of the race, it may impose a penalty of points or fraction of points or make another arrangement it decides is equitable, which may be to impose no penalty.
- Q5.4 The protest committee may protest a boat under rule 60.3. However, it will not protest a boat for breaking instruction Q3.2 or Q4.2 (a), a rule listed in instruction Q2.1, or rule 14 unless there is damage or injury.



APPENDIX 1 Racing Marks and Charts

SOLENT MARK CODES 2015 - IN ZONES

Zone 1 Western Approaches					Zone 4 Mid Solent (E)				
ID	Name	Colour	Lat N	Long W	ID	Name	Colour	Lat N	Long W
1A	Peveril Ledge	R	50 36.41	01 56.10	4A	Reach	G	50 49.05	01 17.65
1B	Poole Bar No 1	G	50 39.29	01 55.14	4B	Coronation	Y	50 49.55	01 17.62
1C	Haven Insurance	Y	50 40.31	01 54.02	4C	Stormforce Coaching	Y	50 49.21	01 17.46
1D	(spare)				4D	Calshot	BY	50 48.44	01 17.03
1E	Christchurch Ledge Buoy	Y	50 41.60	01 41.50	4E	RYS	Y	50 47.67	01 17.00
1F	Needles Fairway	RW	50 38.24	01 38.98	4F	Wight Vodka	Y	50 47.20	01 17.00
1G	South West Shingles	R	50 39.29	01 37.52	4G	Cutter	Y	50 49.45	01 16.91
1H	Bridge	YBY	50 39.63	01 36.88	4H	East Knoll	G	50 47.96	01 16.83
1J	Shingles Elbow	R	50 40.37	01 36.05	4J	hamblewinterseries.com	Y	50 48.63	01 16.65
1K	North Head	G	50 42.69	01 35.52	4K	Royal London YC	Y	50 46.15	01 16.65
1L	Needles Lighthouse	RW	50 39.73	01 35.50	4L	William	Y	50 49.03	01 16.49
1M	Warden	G	50 41.48	01 33.55	4M	Hill Head	R	50 48.07	01 16.00
1N	North East Shingles	BYB	50 41.96	01 33.41	4N	Flying Fish	Y	50 47.27	01 15.90
Zone 2 West Solent					4P	West Ryde Middle	YBY	50 46.48	01 15.79
2A	Echopilot	Y	50 42.79	01 32.53	4Q	Wilson Covers	Y	50 48.46	01 15.72
2B	Dunford	Y	50 43.38	01 31.54	4R	Darling Buoy	Y	50 49.18	01 15.71
2C	Colten	Y	50 43.83	01 30.86	4S	Royal Southern	Y	50 48.88	01 15.57
2F	Berthon	Y	50 44.20	01 29.22	4T	Norris	R	50 45.97	01 15.51
2H	Paul Jackson	Y	50 44.30	01 28.16	4U	Sunsail	Y	50 46.43	01 15.09
2J	Zwerver	Y	50 45.11	01 27.34	4V	Hamble Yacht Services	Y	50 48.13	01 14.64
2K	Quod Possumus!	Y	50 44.83	01 26.09	4W	Artemis The Profit Hunter	Y	50 47.33	01 14.59
2R	Durns	Y	50 45.43	01 25.89	4X	Rolly Tasker Sails	Y	50 45.53	01 14.39
2T	Lymington Bank	R	50 43.10	01 30.85	4Y	North Ryde Middle	R	50 46.61	01 14.31
2X	Solent Bank	R	50 44.23	01 27.37	4Z	South Ryde Middle	G	50 46.13	01 14.16
20	Sconce	BY	50 42.53	01 31.43	40	Fastnet Insurance	Y	50 47.66	01 13.65
21	Black Rock	G	50 42.53	01 30.43	41	East Bramble	BYB	50 47.23	01 13.64
22	George Hotel	Y	50 42.86	01 29.40	42	Peel Bank	R	50 45.49	01 13.35
24	The English Summer Berry Co	Y	50 42.86	01 28.42	43	Chilgrove Gin	Y	50 46.16	01 13.09
25	Caldwells Estate Agents	Y	50 43.15	01 27.49	44	Champagne Pol Roger	Y	50 47.31	01 12.10
26	Hamstead Ledge	G	50 43.87	01 26.18	45	South East Ryde Middle	YB	50 45.93	01 12.10
Zone 3 Mid Solent (W)					46	North East Ryde Middle	R	50 46.21	01 11.88
3A	West Lepe	R	50 45.24	01 24.09	Zone 5 East Solent				
3B	eDigitalResearch	Y	50 44.18	01 23.79	5A	Mackley Van Oord	Y	50 45.03	01 11.89
3C	craftinsure.com	Y	50 45.64	01 23.12	5B	Mother Bank	R	50 45.49	01 11.21
3D	Salt Mead	G	50 44.51	01 23.04	5C	Browndown	G	50 46.57	01 10.95
3E	Cowes Radio	Y	50 46.13	01 22.19	5D	Kemps Quay	Y	50 45.18	01 09.65
3F	elephantboatyard.co.uk	Y	50 44.63	01 21.88	5E	Darling Associates Architects	Y	50 46.26	01 08.76
3G	Sevenstar Yacht Transport	Y	50 46.58	01 21.46	5F	North Sturbridge	BY	50 45.33	01 08.23
3H	East Lepe	R	50 45.93	01 21.07	5G	RNC & RAYC	Y	50 46.42	01 07.90
3J	Baxters (Cowes Week only)	O	50 45.23	01 20.69	5H	Portsmouth Sailing Club	Y	50 46.82	01 07.35
3K	Lepe Spit	YB	50 46.78	01 20.64	5J	KB Dry Stack	Y	50 46.61	01 07.29
3L	Gurnard Ledge	G	50 45.51	01 20.59	5K	Look Marine Insurance	Y	50 47.08	01 06.78
3M	(spare)				5L	(spare)			
3N	Quinnell	Y	50 47.07	01 19.88	5M	Gleeds	Y	50 46.16	01 06.39
3P	Bainbridge International	Y	50 45.68	01 19.98	5N	Mary Rose	Y	50 45.80	01 06.20
3Q	EFG	Y	50 45.97	01 19.45	5P	Vail Williams	Y	50 46.51	01 05.98
3R	North East Gurnard	R	50 47.06	01 19.42	5Q	Outer Spit	YB	50 45.58	01 05.50
3S	Royal Thames	Y	50 47.81	01 19.25	5R	Horse Sand Buoy	G	50 45.53	01 05.27
3T	KMS	Y	50 46.10	01 18.87	5S	Saddle Buoy	G	50 45.20	01 04.98
3U	Gurnard	BY	50 46.22	01 18.84	<div>Mark codes are in order by longitude from west to east, except that:</div> <div>(a) Zone 2 is split into Mainland, Middle, and Island Side</div> <div>(b) any extra/new marks may be at the end of their Zones</div>				
3V	West Bramble	YBY	50 47.20	01 18.65					
3W	Williams Shipping	Y	50 47.20	01 18.55					
3X	Island Sailing Club	Y	50 46.10	01 18.43					
3Y	West Knoll	Y	50 47.43	01 17.84					
3Z	Trinity House Buoy	Y	50 46.31	01 17.75					
30	RORC	Y	50 47.12	01 17.72					
31	South Bramble	G	50 46.98	01 17.72					
32	Snowden	Y	50 46.20	01 17.75					
33	Prince Consort	BY	50 46.41	01 17.56					

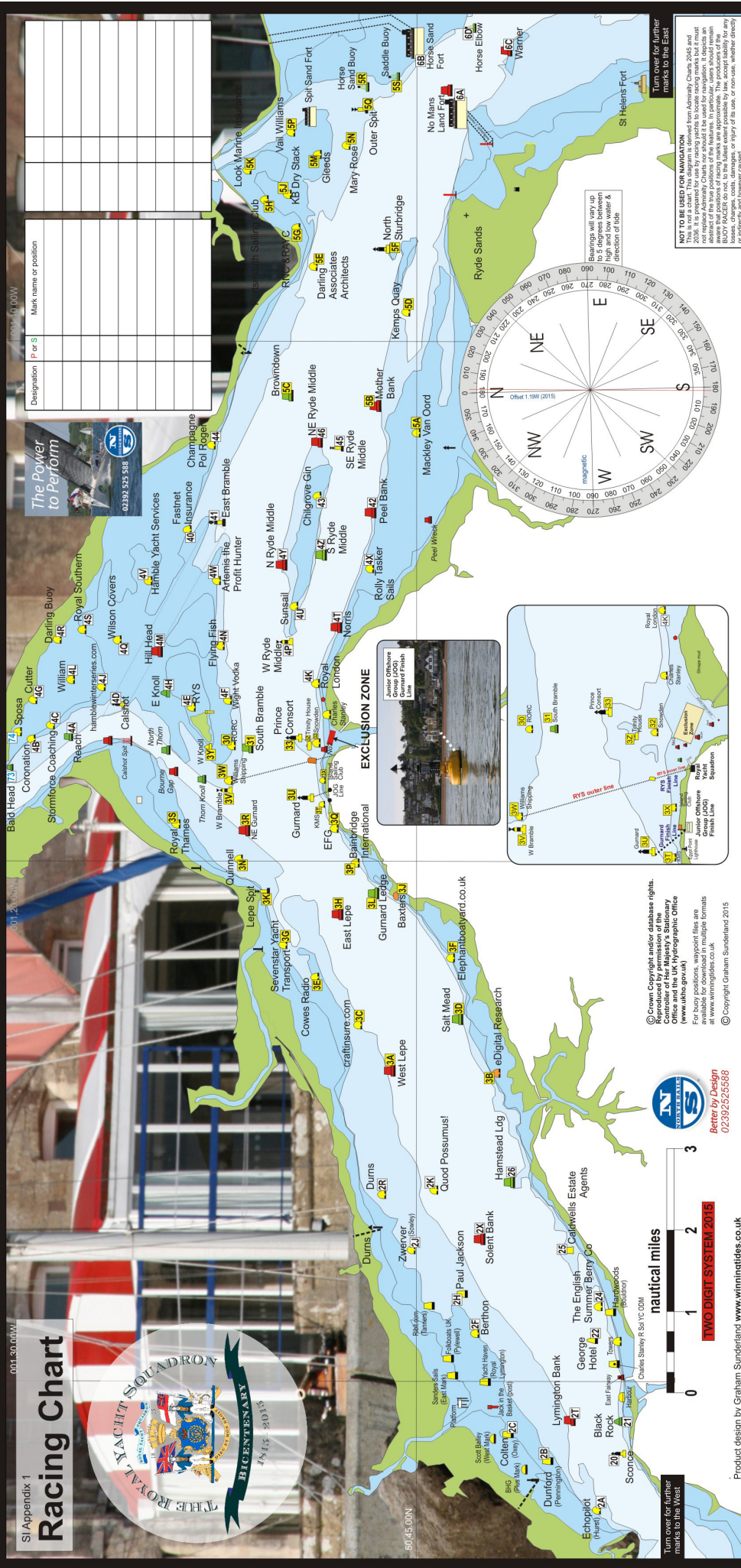
SOLENT MARK CODES 2015 - IN ZONES

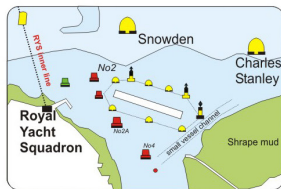
Zone 6 Eastern Approaches					Zones 8/9 Laid Marks and Local Marks				
ID	Name	Colour	Lat N	Long W	ID	Name	Colour	Lat N	Long W
6A	No Man's Land Fort	B	50 44.40	01 05.70	8A	Windward Laid Mark			
6B	Horse Sand Fort	B	50 45.01	01 04.34	8B	Windward Spreader Mark			
6C	Warner	R	50 43.87	01 03.99	8C	Leeward Laid Mark			
6D	Horse Elbow	G	50 44.26	01 03.88	8D	Leeward Spreader Mark			
6E	West Princessa	YBY	50 40.16	01 03.65	8E	Leeward Gate			
6F	Bembridge Ledge Buoy	BYB	50 41.15	01 02.81	8F	Middle Gate			
6G	St Helens Buoy	R	50 43.36	01 02.41	8G	Wing Mark			
6H	Dean Elbow	G	50 43.69	01 01.88	8H	Outer Distance Mark			
6J	Nab East	R	50 42.86	01 00.80	8J				
6K	Horse Tail	G	50 43.23	01 00.23	8K				
6L	Winner	YB	50 45.10	01 00.10	8L				
6M	Nab End	R	50 42.63	00 59.49	8M				
6N	Dean Tail	G	50 42.99	00 59.17	8N				
6P	New Grounds	BYB	50 41.84	00 58.49	8P				
6Q	(spare)				8Q				
6R	Nab Tower	B	50 40.08	00 57.15	8R				
6S	Outer Nab No 2	BYB	50 38.43	00 57.70	8S				
Zone 7 Southampton Water					8T				
7A	Gymp	R	50 53.17	01 24.30	8U				
7B	Hythe Knock	R	50 52.83	01 23.81	8V				
7C	No 1 Swinging	G	50 53.00	01 23.44	8W				
7D	Weston Shelf	G	50 52.71	01 23.26	8X				
7E	Hythe 5	Y	50 52.24	01 23.18	8Y				
7F	Jib	Y	50 52.96	01 23.06	8Z				
7G	Hythe 4	Y	50 52.19	01 23.10	80				
7H	Moorhead	G	50 52.55	01 22.90	81				
7J	Deans Elbow	R	50 52.16	01 22.76	82				
7K	NW Netley	G	50 52.31	01 22.73	83				
7L	(spare)				84				
7M	Bird Pile	R	50 51.72	01 22.33	85				
7N	Royal Southampton	Y	50 51.76	01 22.28	86				
7P	Hovercraft 3	Y	50 52.43	01 22.01	87				
7Q	Netley	G	50 52.03	01 21.81	88				
7R	Lains Lake	R	50 51.59	01 21.65	89				
7S	Deans Lake	R	50 51.40	01 21.59	9A				
7T	Hovercraft 2	Y	50 52.21	01 21.58	9B				
7U	Hound	G	50 51.68	01 21.52	9C				
7V	Hovercraft 1	Y	50 51.99	01 21.16	9D				
7W	After Barn	G	50 51.53	01 20.82	9E				
7X	Hamblecliff	B	50 51.28	01 20.55	9F				
7Y	Cadland	R	50 51.02	01 20.54	9G				
7Z	Greenland	G	50 51.11	01 20.38	9H				
70	Cathead	Y	50 50.61	01 19.24	9J				
71	Mark	Y	50 49.56	01 18.94	9K				
72	Hamble Point	YB	50 50.15	01 18.66	9L				
73	Bald Head	G	50 49.80	01 18.07	9M				
74	Sposa	Y	50 49.66	01 17.59	9N				
75	Magazine	Y	50 52.83	01 23.98	9P				
					9Q				
					9R				
					9S				
					9T				
					9U				
					9V				
					9W				
					9X				
					9Y				
					9Z				
					90				

25 March 2015

Mark codes are in order by longitude from west to east, except that:
(a) Zone 2 is split into Mainland, Middle, and Island Side
(b) any extra/new marks may be at the end of their Zones

Racing Chart





Race Around The Island

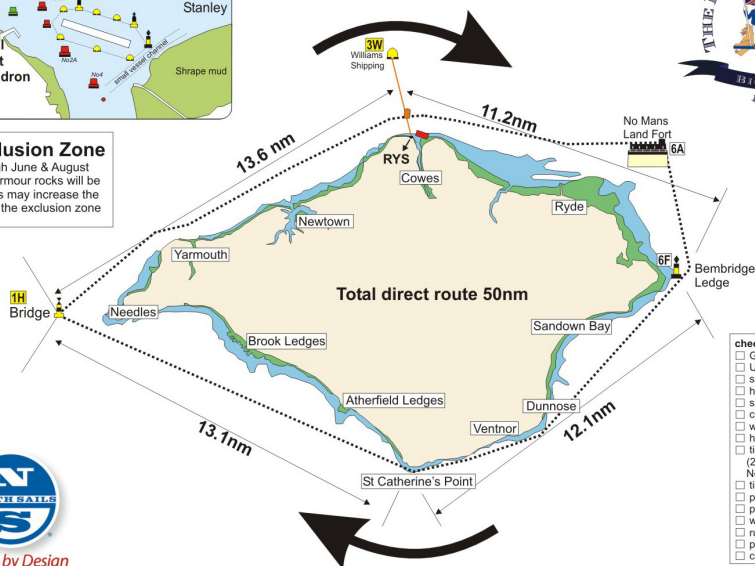


Exclusion Zone

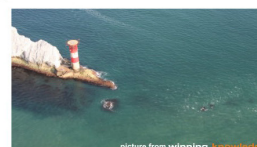
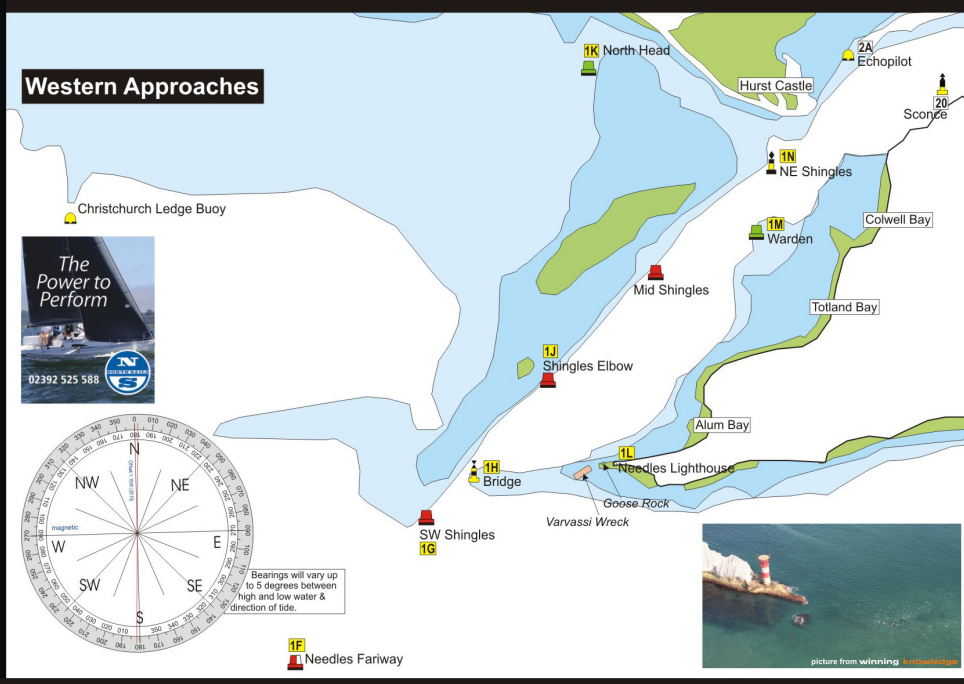
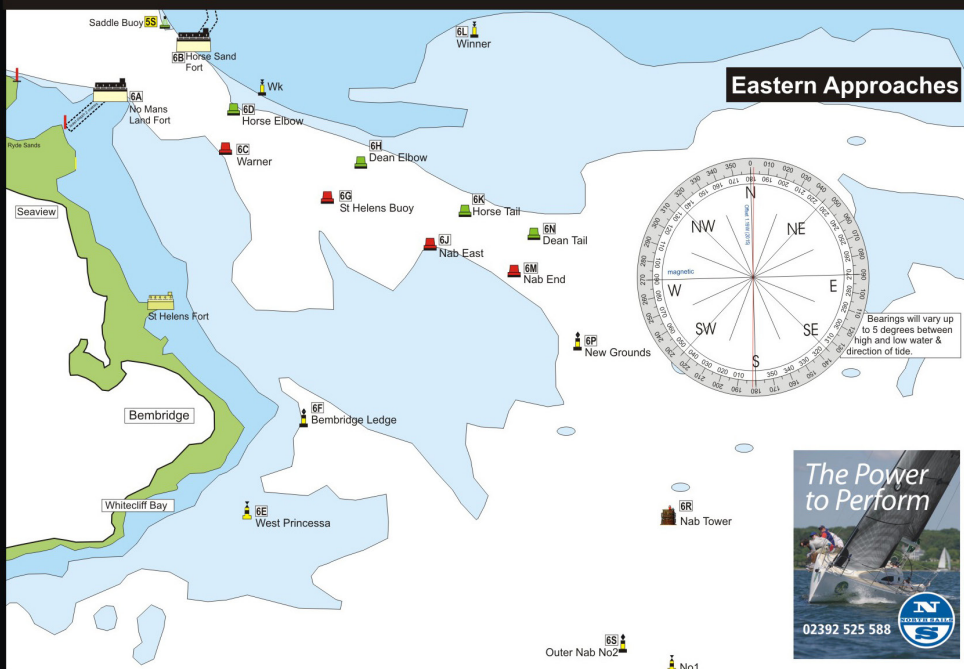
Through June & August 2015 armour rocks will be laid this may increase the size of the exclusion zone



Better by Design



- check list**
- ☐ GPS hand held
 - ☐ Up to date waypoints on GPS
 - ☐ spare batteries
 - ☐ hand held VHF
 - ☐ sailing instructions
 - ☐ charts 2045 2035 2036
 - ☐ wet note pad
 - ☐ high water times
 - ☐ tidal height curve (2 metres less at The Needles than PORTSMOUTH)
 - ☐ tide book
 - ☐ pencil
 - ☐ pvc tape
 - ☐ watch
 - ☐ rule book
 - ☐ protest flag
 - ☐ class flag





APPENDIX 2 CHC Local Notice to Mariners



LOCAL NOTICE TO MARINERS No 05(T) of 2015

BREAKWATER EXCLUSION ZONE BUOYAGE AND BREAKWATER WORKS

(This notice supersedes Local Notice to Mariners No 27(T) of 2014 which is hereby cancelled)

Notice is hereby given that works on the new detached breakwater have been completed for the winter period. Work is expected to recommence in late spring 2015, which will involve the reshaping of the breakwater gravel core and the placement of rock armour. An Exclusion Zone remains in force which is marked as follows:

Latitude (N)	Longitude (W)	Buoy	Light
50 46.068	01 17.743	N. Cardinal	VQ
50 46.059	01 17.682	Yellow Special Mark	Fl.Y.4s
50 46.049	01 17.604	Yellow Special Mark	Fl.Y.4s
50 46.040	01 17.544	N. Cardinal	VQ
50 45.978	01 17.456	E. Cardinal	Fl.VQ.3
50 45.942	01 17.533	Yellow Special Mark	Fl.Y.4s
50 45.960	01 17.683	Yellow Special Mark	Fl.Y.4s
50 45.974	01 17.800	Yellow Special Mark	Fl.Y.4s
50 46.025	01 17.836	Breakwater West Red lateral	Fl.R.2s
50 46.057	01 17.805	Yellow Special Mark	Fl.Y.4s

Table 1: Exclusion Zone Navigation Marks, Positions and Characteristics

In addition, the breakwater is marked with 5 yellow lights mounted on yellow special mark beacons. A yellow special mark is also in place marking the eastern toe of the breakwater as follows:

Table 2: Breakwater Marks, Positions and Characteristics

Latitude (N)	Longitude (W)	Buoy or Beacon	Light/s
On Breakwater	On Breakwater	5 x Yellow Special Mark Beacons	Fl.Y.5s
50 45.982	01 17.514	Yellow Special Mark (Breakwater East)	Fl.Y.2s

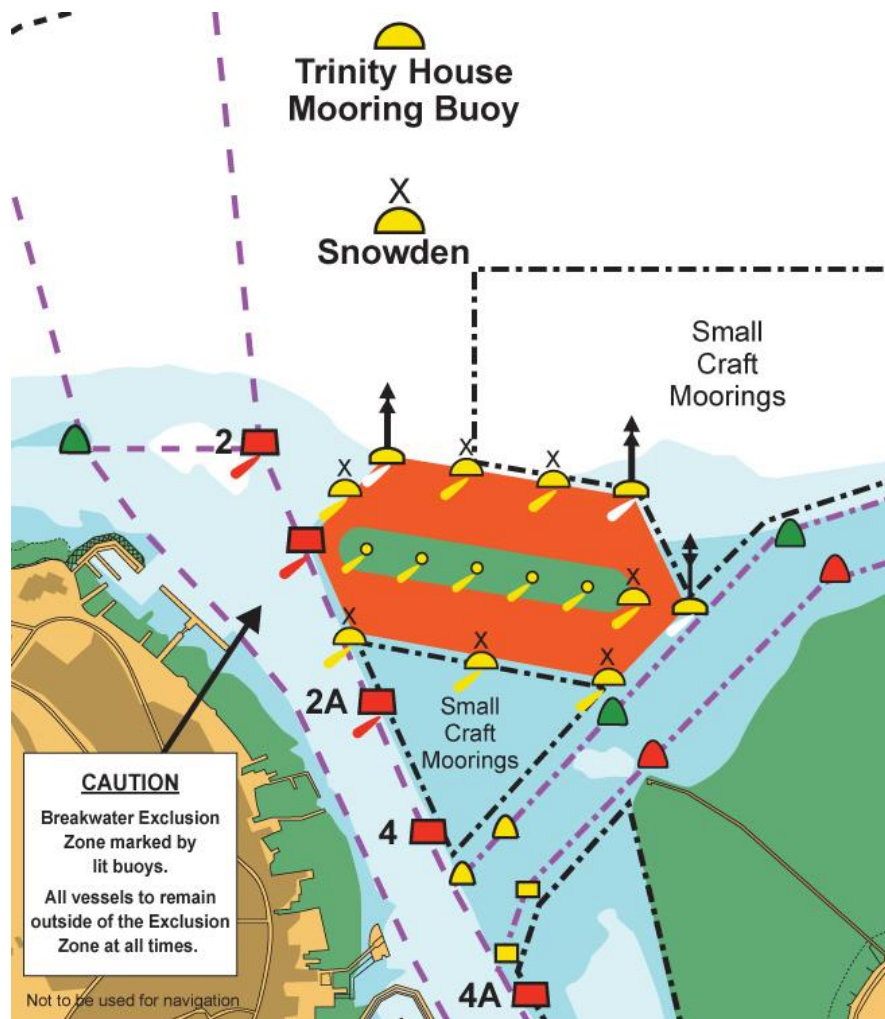


Fig 1: Stage 7 Exclusion Zone winter 2014/15

All vessels are reminded that they must stay outside of the Exclusion Zone at all times. Contravening the Exclusion Zone is a breach of the [Cowes Harbour General Direction 10](#).

Harbour users are also recommended to familiarise themselves with the contents of [L Notice to Mariners: Changes to Tidal Flows within Cowes Harbour](#).

A new Notice to Mariners will be issued prior to any further changes in the Exclusion Zone or associated works.

This Local Notice to Mariners remains in force until further notice.

R Hodgson

Deputy Harbour Master, Harbour Office, Town Quay, Cowes, Isle of Wight, PO31 7AS

Email: chc@cowes.co.uk

Internet: www.cowesharbourcommission.co.uk

7th January 2015



APPENDIX 3
ABP Notice to Mariners



NOTICE TO MARINERS

No 36(T) of 2015

Port of Southampton –
Royal Yacht Squadron Bicentenary International Regatta
27th – 31st July 2015

NOTICE IS HEREBY GIVEN jointly by the Harbour Master ABP Southampton, the Queen's Harbour Master Portsmouth and the Cowes Harbour Master that the Royal Yacht Squadron (RYS) is celebrating its Bicentenary and will be holding an International Regatta and a number of other events in the Central Solent off Cowes, and in the wider Eastern and Western Solent, over the period 27th – 31st July 2015.

Up to 25 yacht clubs and up to 100 yachts will be taking part in the Regatta, with competitors including modern and classic boats racing under IRC, team racing in J/70 boats, Corinthian one-design class racing in Beneteau F40s and (currently) up to 3 J Class yachts. Additionally, some competitors will have just completed the 2015 Transatlantic Race, from Newport, Rhode Island and are expected to arrive in Cowes in time for the Regatta.

Starts for the larger classes will be conducted from the RYS start line and to facilitate these a large, yellow, cylindrical, inflatable mark, 'Alpha', will be laid in the approaches to Cowes Harbour, as follows:

'Alpha' – 4.0 cables West South West (254° True) of Prince Consort Buoy, position 50°46'.29N, 01°18'.13W. The buoy will have a yellow light, flashing every 5 secs.

Racing will take place daily on Monday 27th, Tuesday 28th, Thursday 30th and Friday 31st July from 0900 until 1600, with IRC classes starting from the RYS Line at 1030. The level rating event for the 10 Beneteau Farr 40s will take place between laid marks in The Eastern Solent. It is intended that courses within The Solent will be set to ensure no conflict between the different participating classes. Events will also include a 'Race Around the Island', eastabout, on Wednesday 29th July from 0800 to 2100.

As per the International Regulations for Preventing Collisions at Sea 1972 (as amended), the normal steering and sailing rules will apply to all competing yachts. Notwithstanding, when racing, to take into account the potential difficulties of manoeuvring J Class and similar sized classic yachts in the congested waters of The Solent, a 'Moving Safety Zone' (MSZ) will be established around each yacht. This MSZ will be centred on each yacht and will extend for 200 metres in all directions. It will apply to the yachts throughout the Central Solent (south of Calshot), Eastern and Western Solent and all craft are to avoid entering the MSZs at all times. The only craft

exempt this prohibition are the yachts' own safety RIBs, allocated RYS safety RIBs, other yachts competing in the same class, an Umpire boat and authorized J Class press boats flying J Class flags. Additionally, RYS RIBs may be stationed at the race turning marks.

Mariners should always consider the manoeuvrability of these large yachts when determining if a risk of collision exists.

Mariners should consult the RYS websites (www.rys.org.uk or www.bic2015.org.uk) for specific details on the Regatta and should contact Southampton VTS on VHF Channel 12 or on 02380 608208 to confirm timings for commercial movements in the normal manner.

This Notice to Mariners will be self-cancelling on completion of the event, on Saturday 1st August 2015.

**Vessel Traffic Services Centre
Berth 37, Eastern Docks
Southampton**

**Captain M Phipps
Harbour Master**

3rd July 2015

**Owners, Agents, Charterers, Marinas, Yacht Clubs and Recreational Sailing
Organisations should ensure that the contents of this Notice are made known to
the masters or persons in charge of their vessels or craft.**

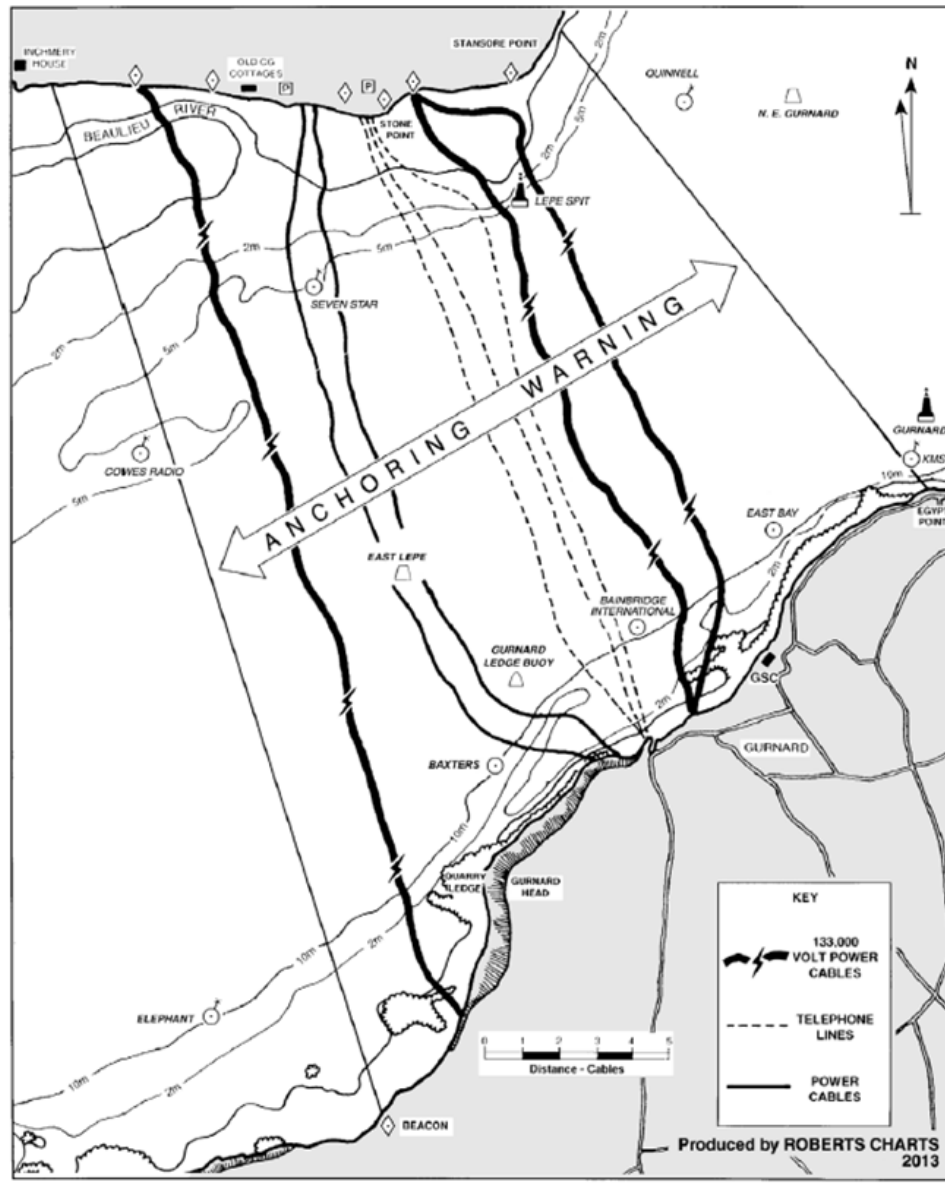
APPENDIX 4

High Voltage Cables and Pipelines

HIGH VOLTAGE CABLES AND PIPELINES

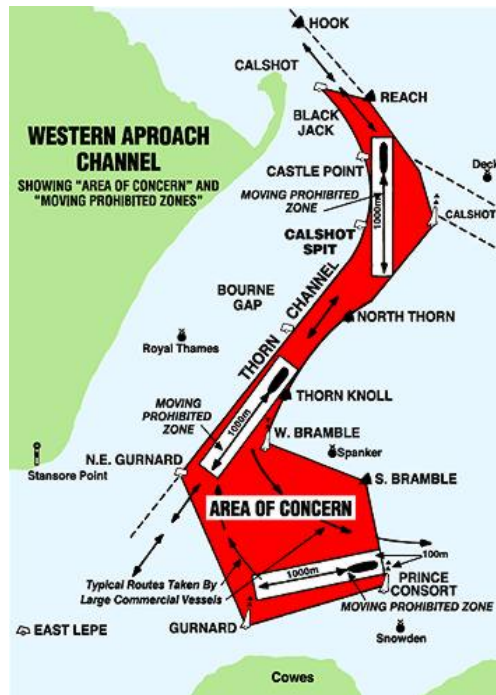
BETWEEN STONE POINT AND GURNARD

(SEE ADMIRALTY CHART 2040 - THE SOLENT - WESTERN PART)



Southampton Harbour Bylaws

Yachts shall observe the Associated British Ports (ABP) Southampton Harbour Bylaws 2003 (see below) at all times and avoid any close quarters situation with large commercial shipping. Particular note should be made of Byelaws 10 & 11 and Associated British Ports Southampton Notice to Mariners No. 3 of 2011 giving details of a moving prohibited zone, shown below, which ranks as an obstruction for the purposes of RRS 19 and 20.



An **Area of Concern** is established in the Western Approach and Thorn Channels, shown on charts as **Entry Restricted**. Every vessel over 150m LOA in this area has around it a **moving prohibited zone** 1000m ahead and 100m either side. Vessels under 20m LOA shall not enter a **moving prohibited zone**.

Vessels over 150m will display by day a black cylinder, by night 3 all-round red lights in a vertical line and may be preceded by a Southampton Harbour Patrol launch (call sign "SP" on VHF 12) showing a blue flashing light.

Southampton Vessel Traffic Services Centre (call sign "VTS") broadcasts hourly information on VHF 14, these broadcasts are made only between Easter and the end of October.